

AETERDERM™

LEXYFILL

Fill Your Luxury Beauty

&

LEXYFILL VOLUME CREAM





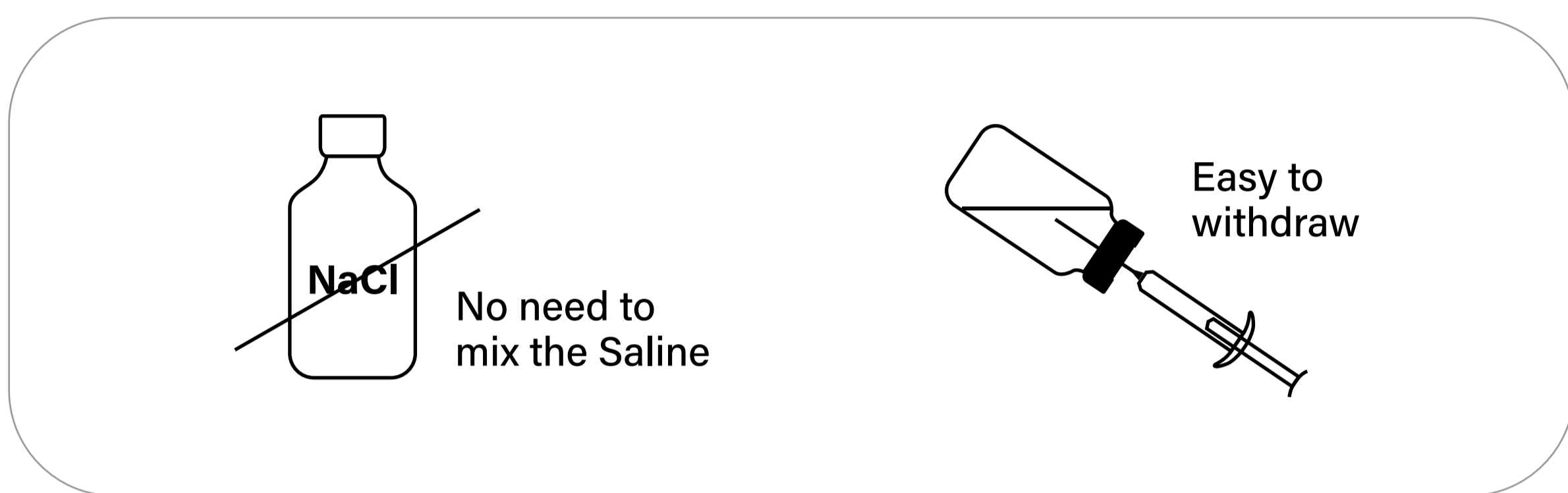
لکھا

Fill your style
Fill Your Luxury beauty

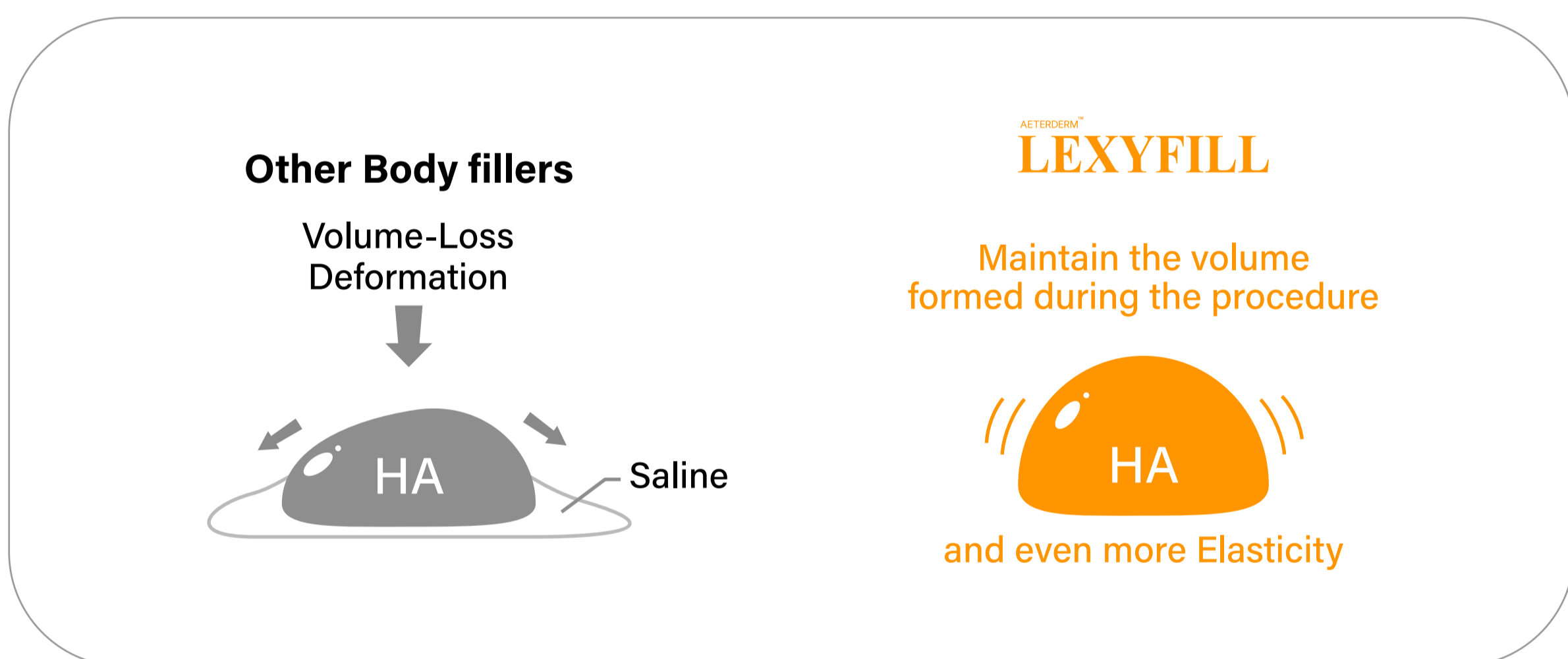
FEATURE

Lower Viscosity ? but Higher Elasticity !

Even without mixing saline, you can easily withdraw it from the vial.



So there is no Volume-loss or deformation caused by saline.
And it will show you Amazing Elasticity.



As a result, you can perform more sophisticated treatment. ✍️

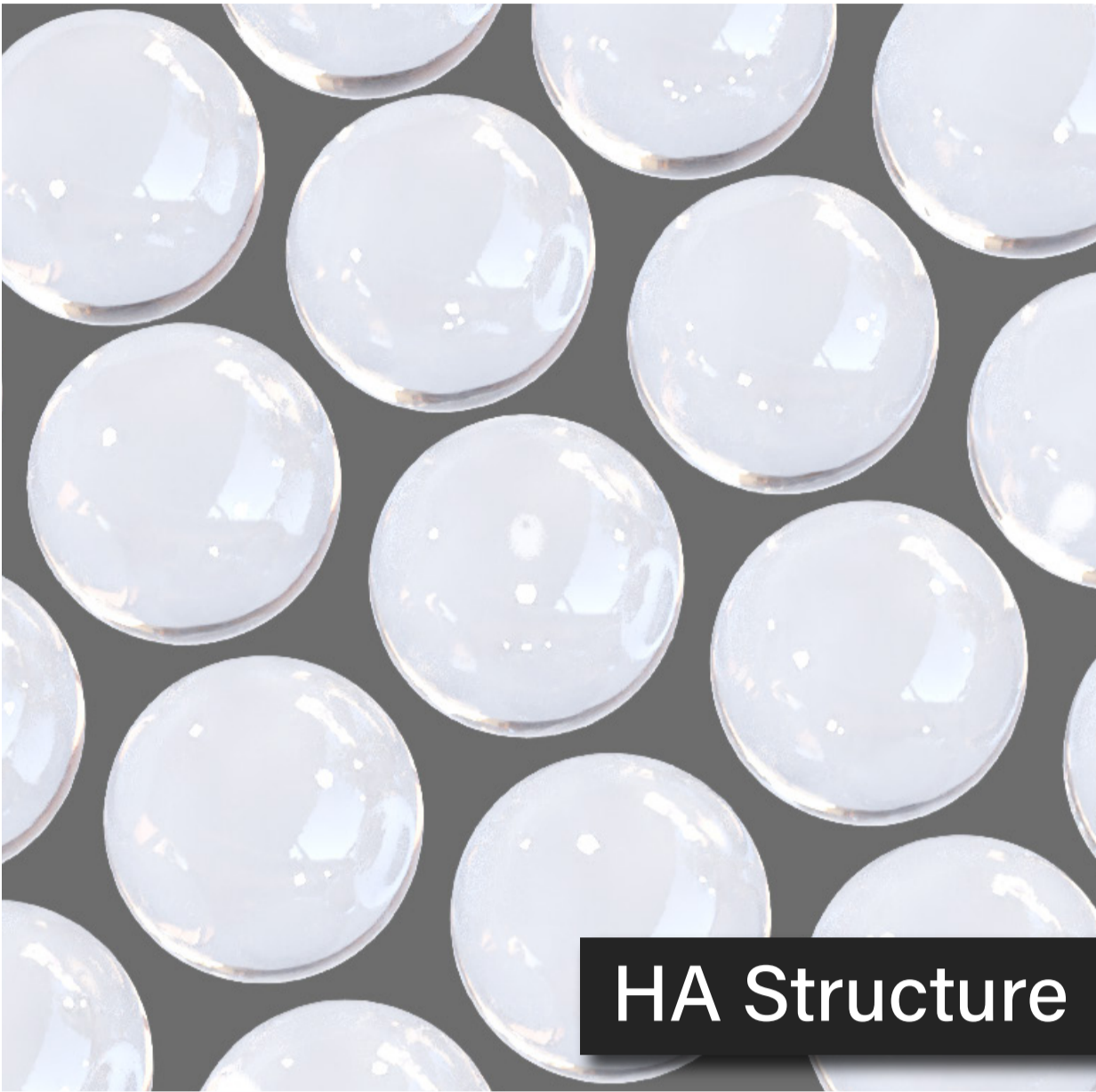
We created body filler
with these amazing features
through long Cross-linking time
at low temperature

For Accurate Body Styling

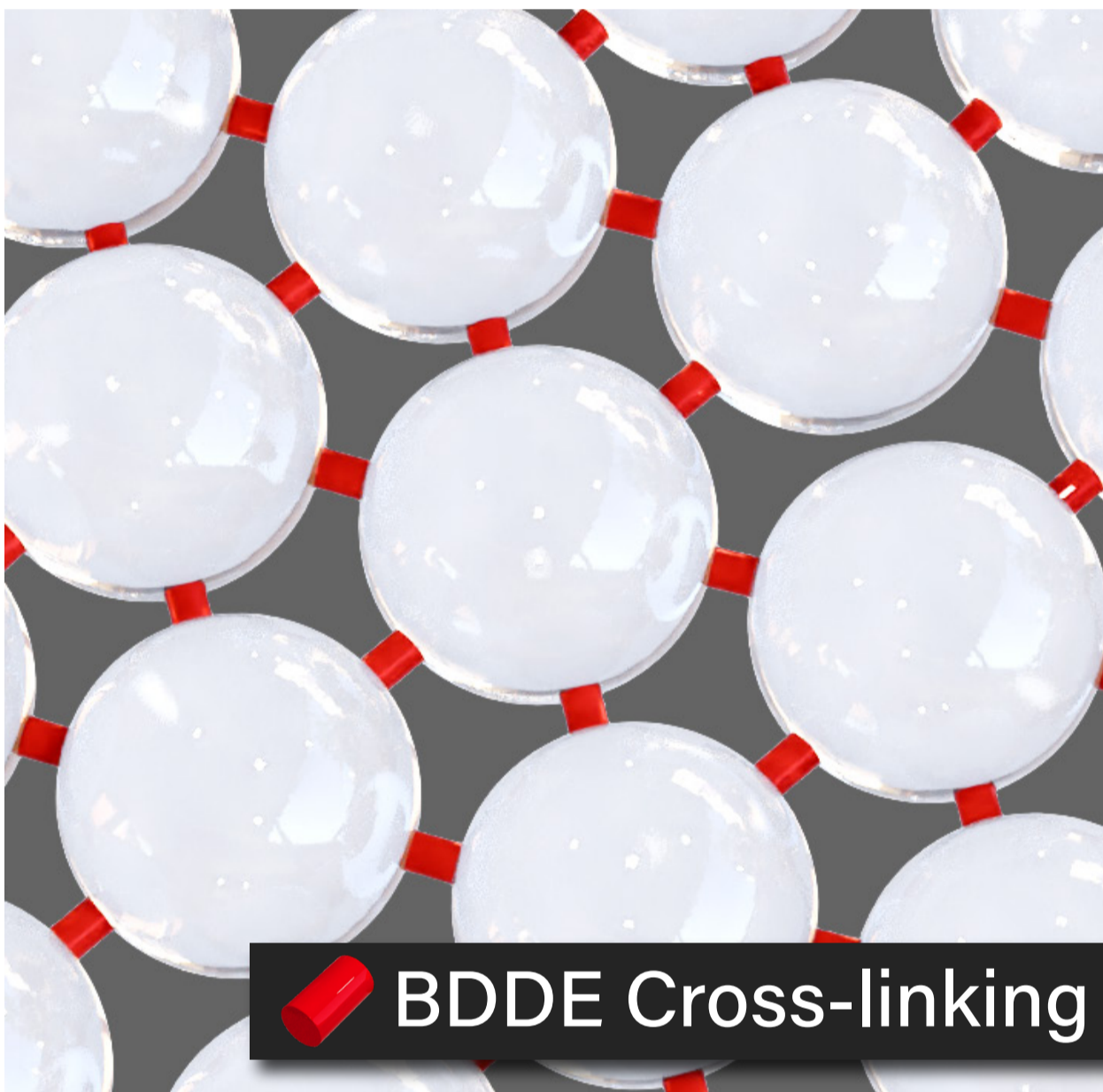


Why is LEXYFILL the Safest? Why is LEXYFILL Highly Elastic?

Other Body Fillers

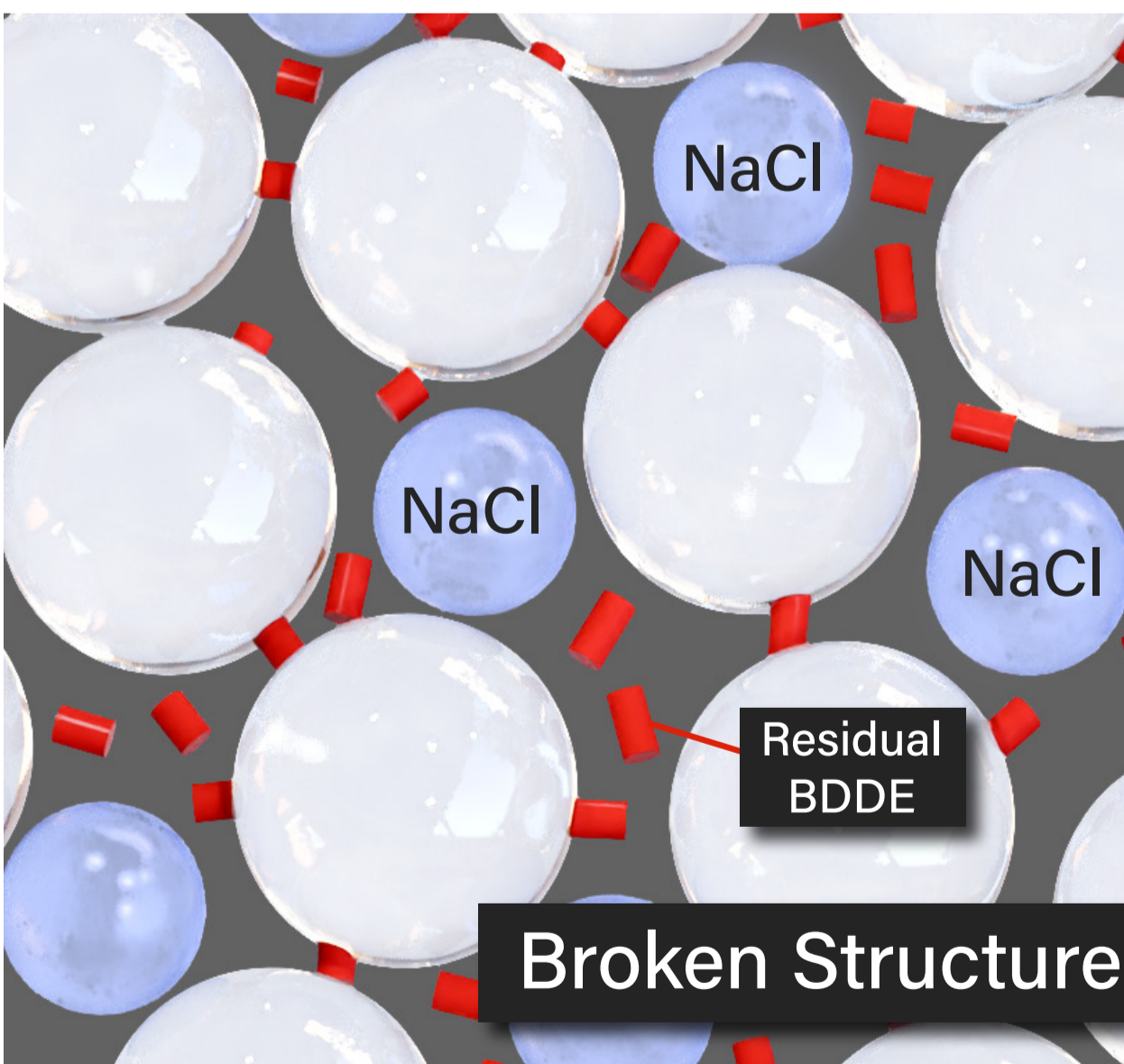


Only use Large molecules of HA.



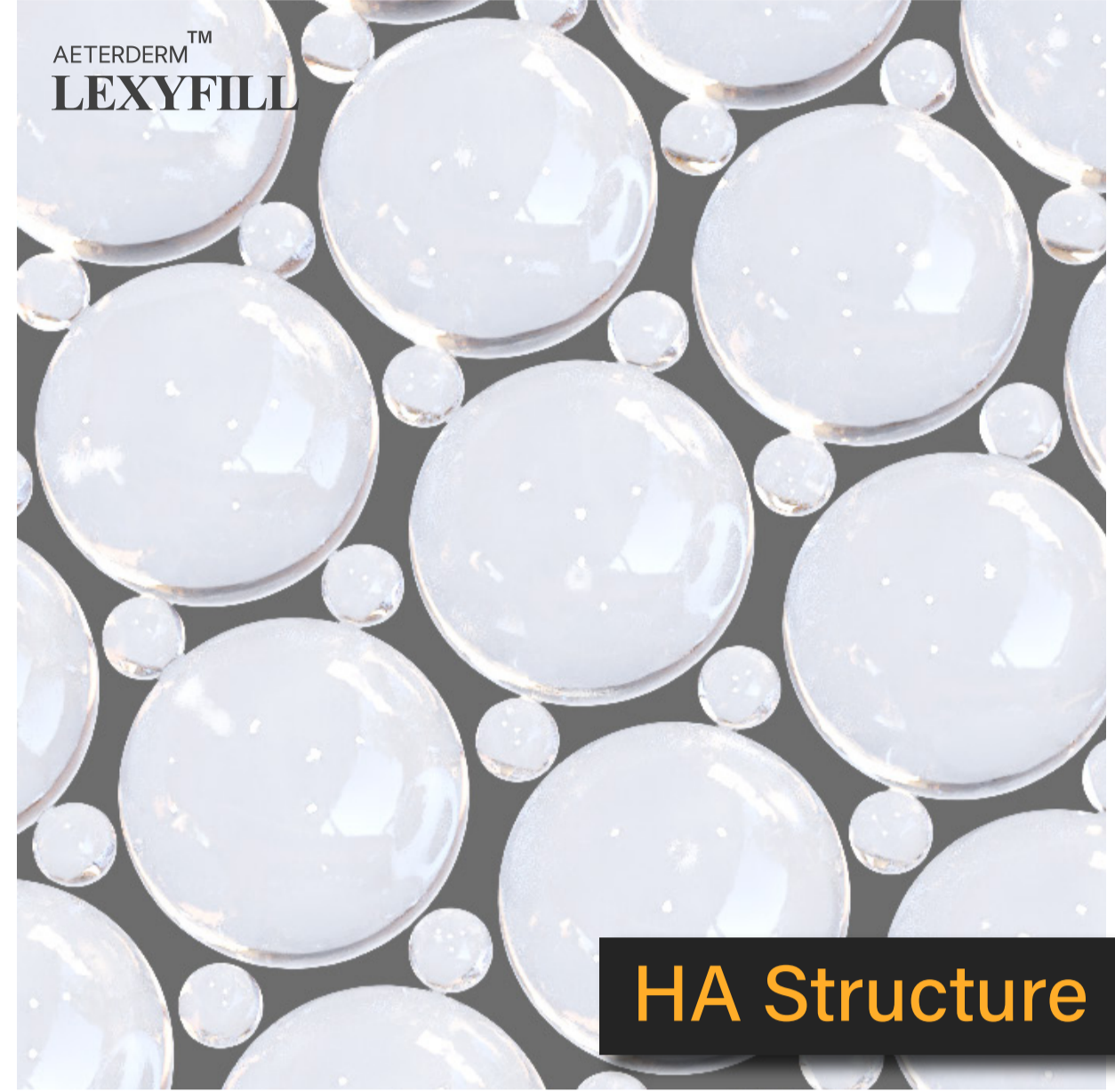
A lot of **BDDE** was used, which can cause serious filler side effects.

Also these fillers are too hard to withdraw from the vial. So it should be combined with saline and shake it to mix.

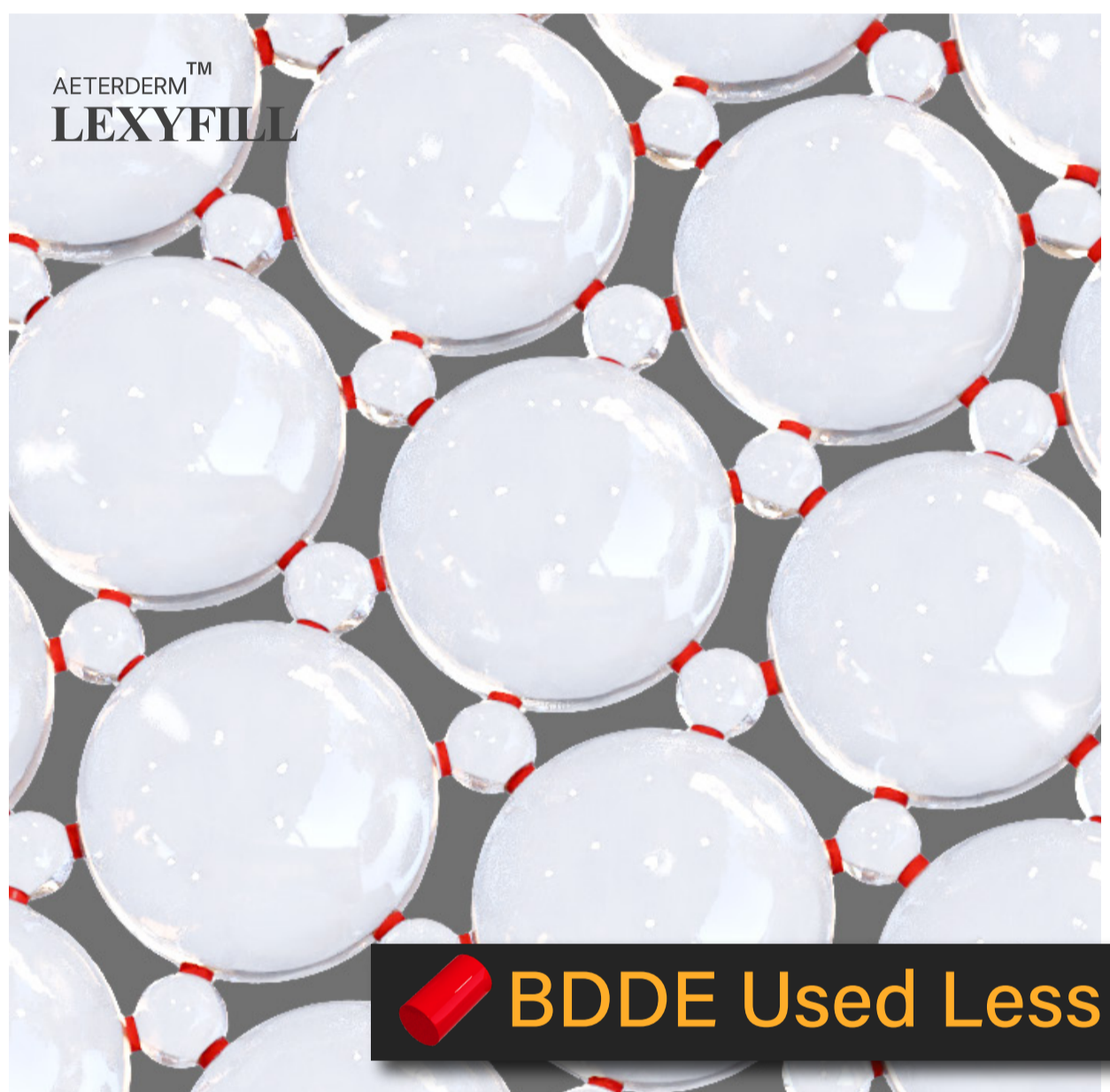


When you add the saline and shake it to mix, The HA cross-linking structure will be totally broken. It cause increasing of Residual BDDE and serious side effects and shock.

AETERDERM™ LEXYFILL Body Filler

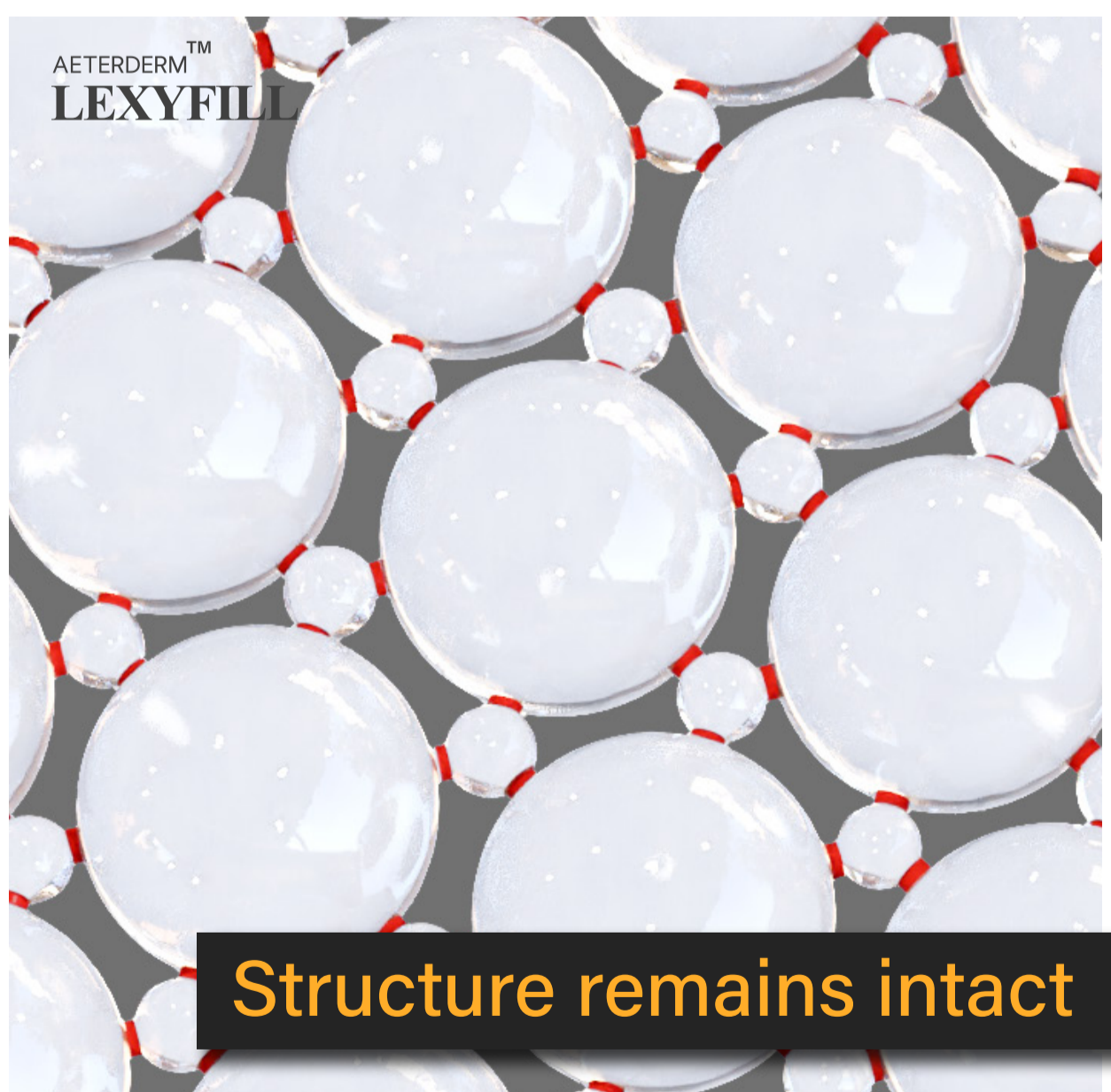


Small molecules of HA were placed between it. So it has higher moisture and elasticity.



Due to this HA structure, cross-linking can be done using very small amounts of **BDDE**

So the probability of side effects is significantly reduced.

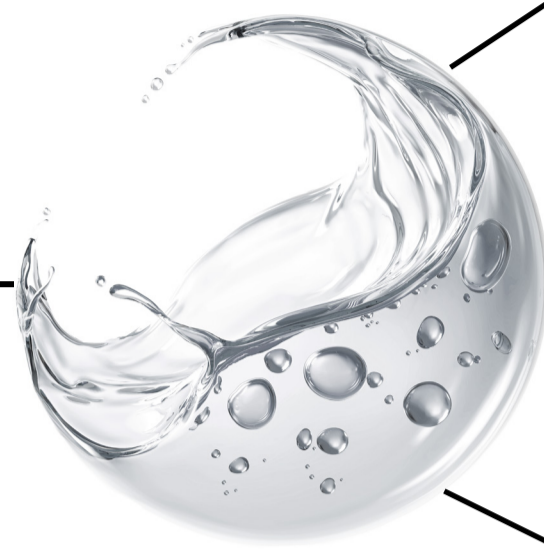


LEXYFILL can be easily drawn out with a syringe without mixing saline, so it can be injected with the HA structure intact.

KEY INGREDIENTS

Hyaluronic Acid

Biphasic crosslinked HA suitable for body volumizing



Repeat 14 times to remove 3 types of toxins. Completely prevent side effects.

- ⊙ Residual BDDE
- ⊙ Endotoxin
- ⊙ Protein

Maximize elasticity and retention by mixing large and small molecules of HA



HA Concentration

24 mg / mL

MOD

(Degree of Modification, mol%)

3.85 %

Gel type

Biphasic

Storage Modulus (G')

100 - 250 Pa

Injection Force (N)
(30G UTW)

20 N

NON-CLINICAL STUDIES

Viscosity & Elasticity test



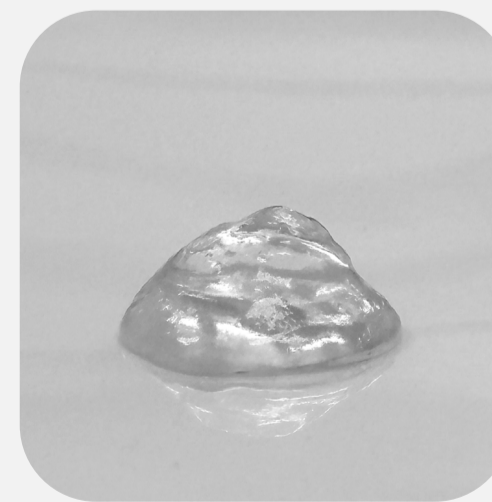
Initial Shape



After 1 hour



After 6 hour



After 12 hour



After 24 hour

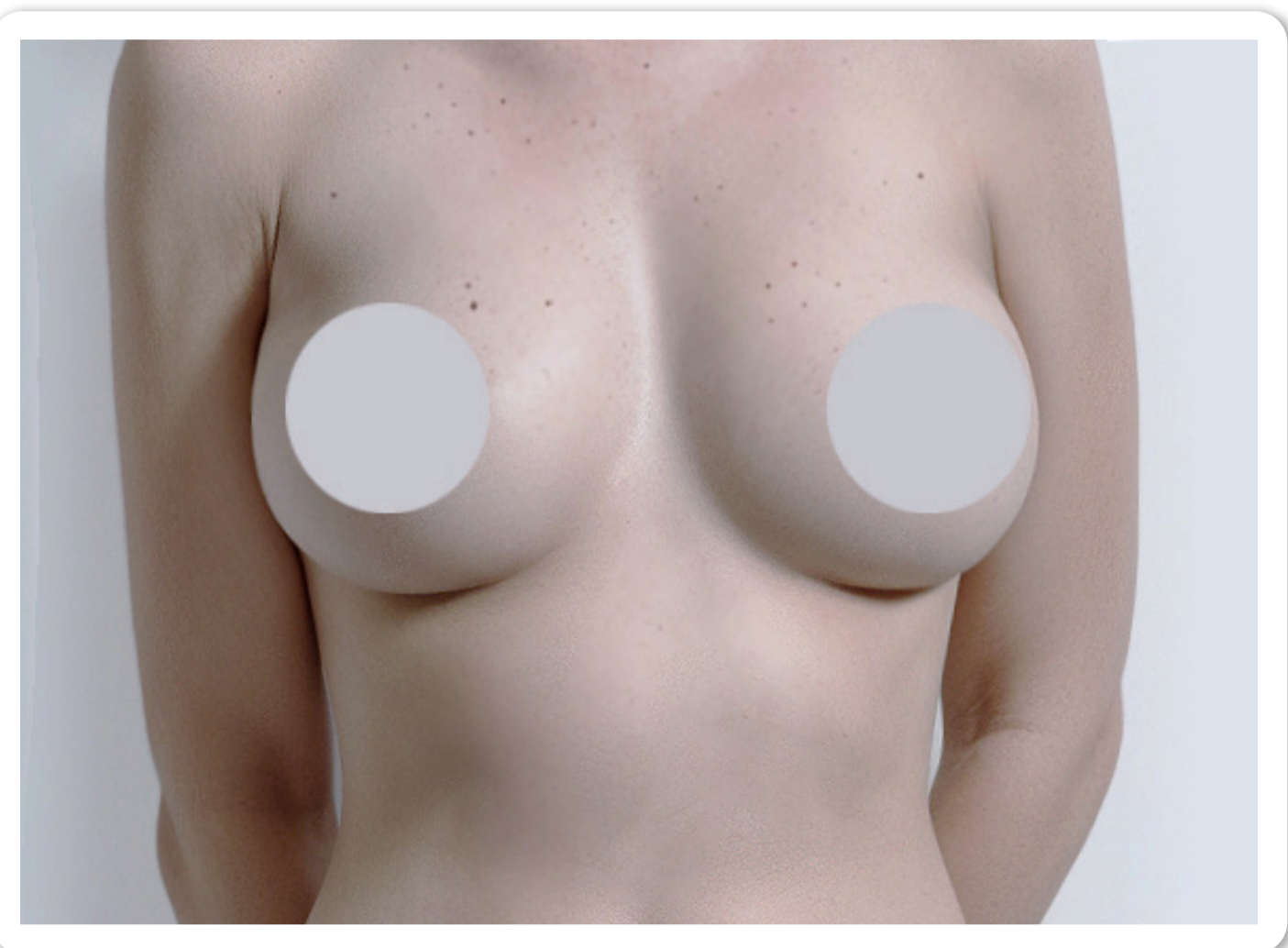
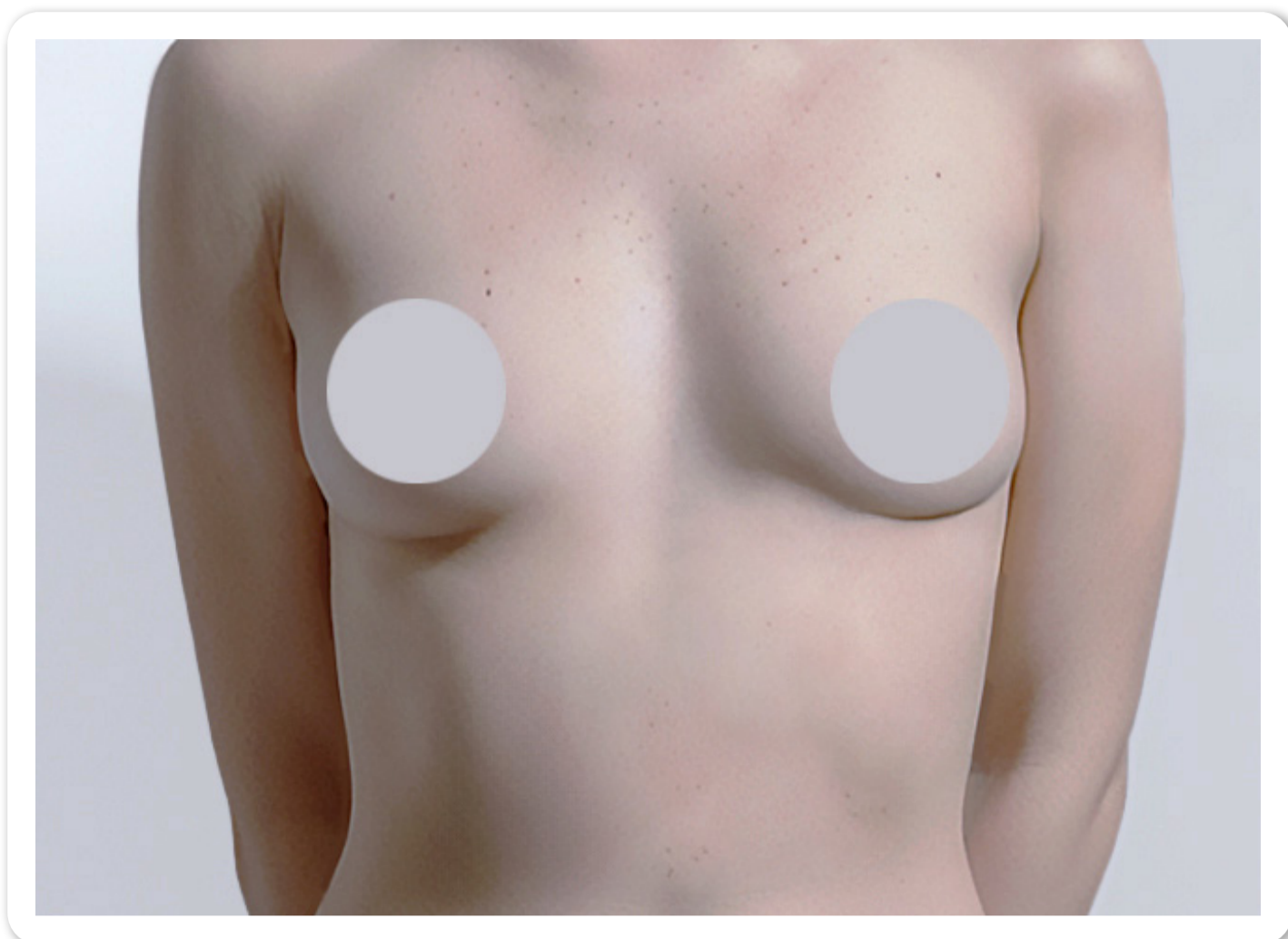


AETERDERIM™

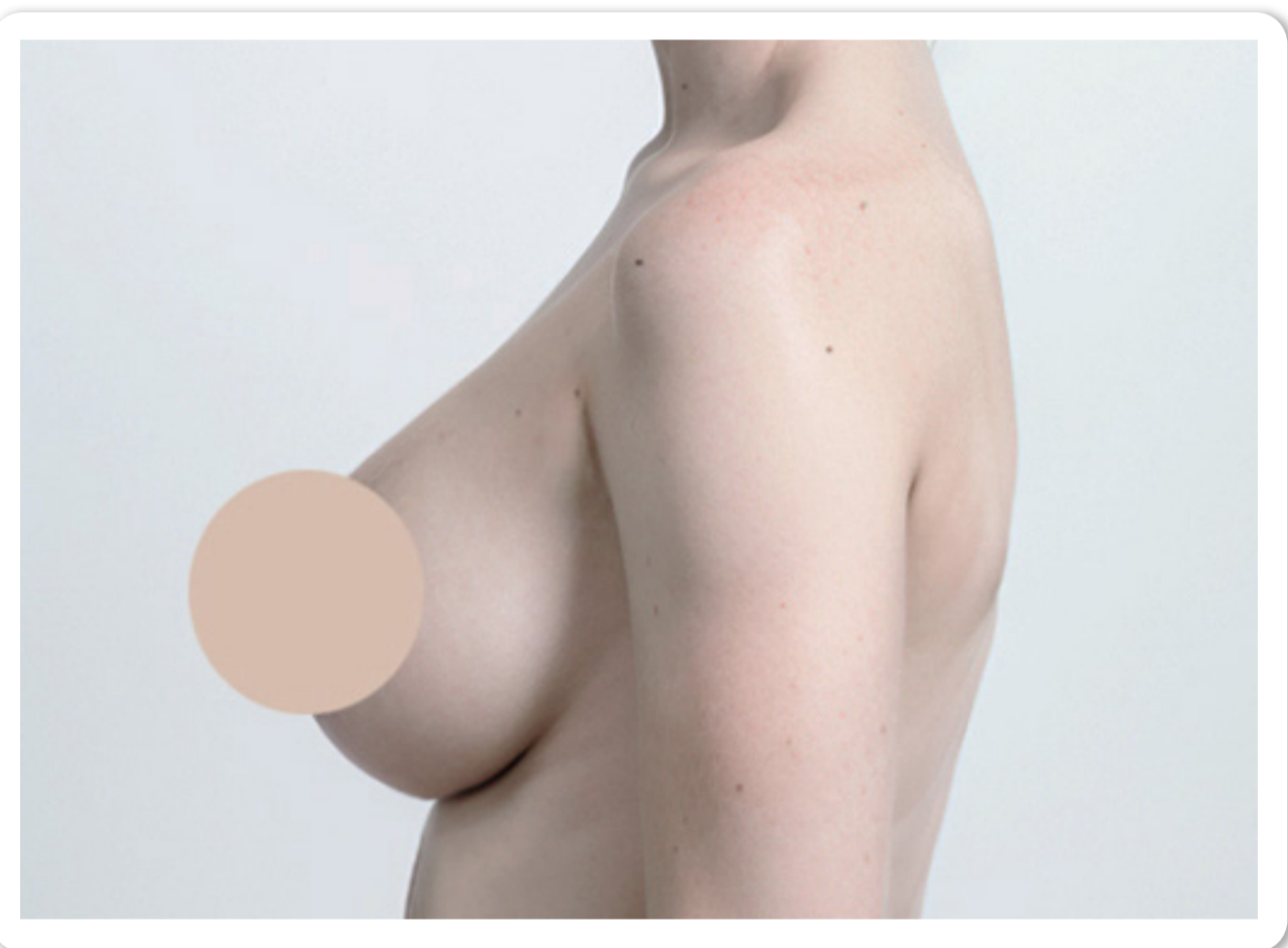
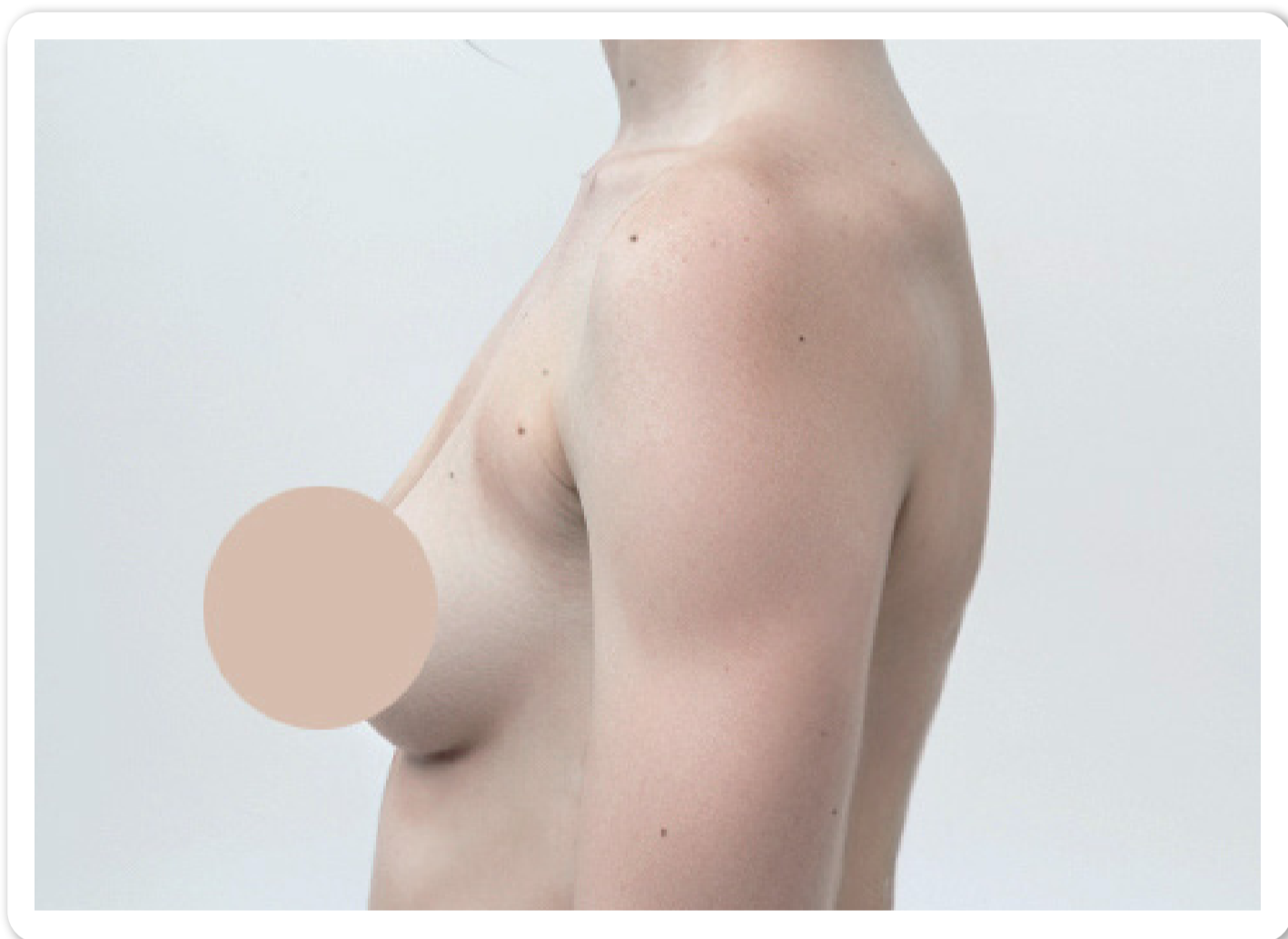
LUXYELLE

CLINICAL STUDIES

Breast Augmentation Procedure

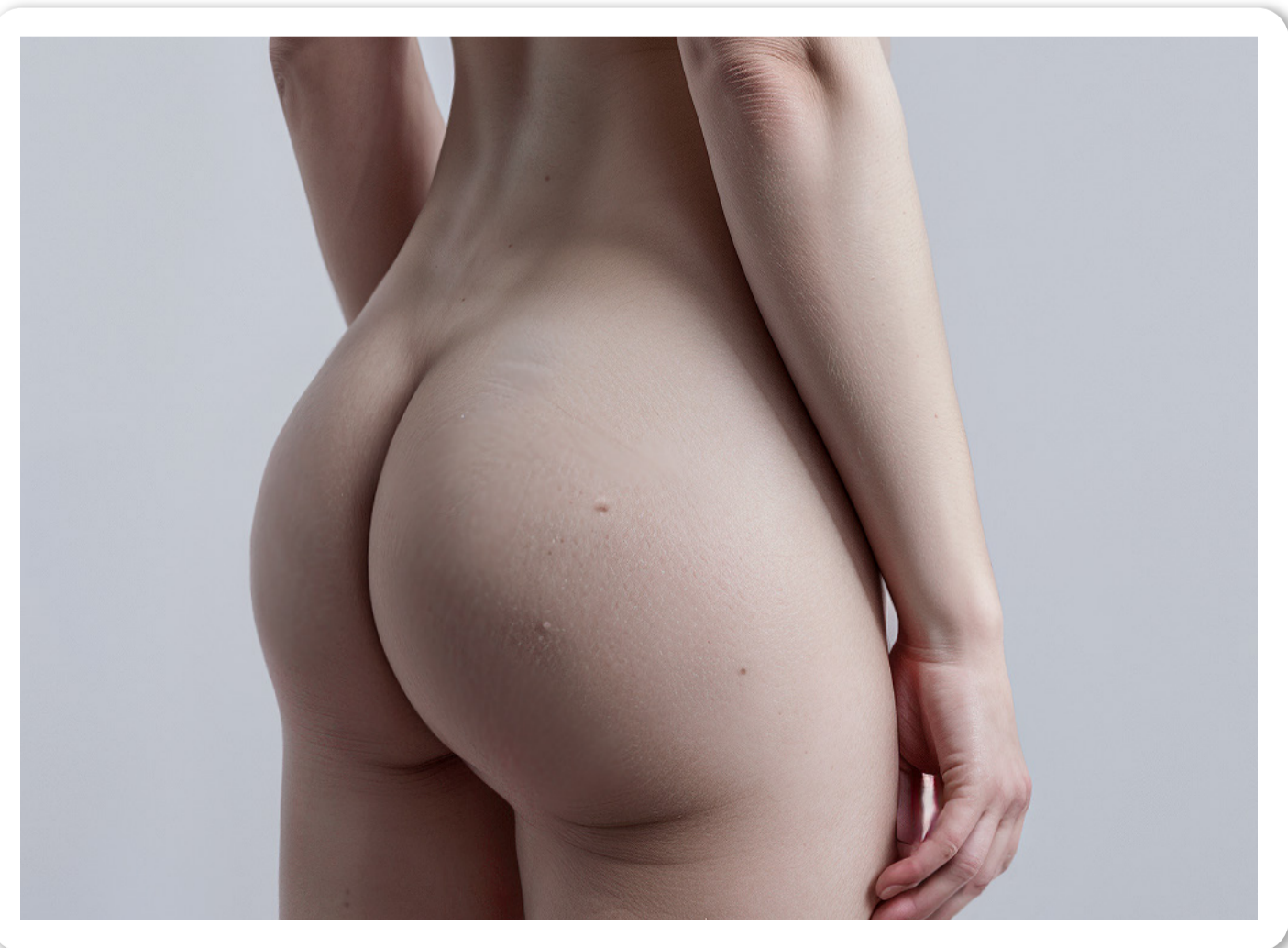
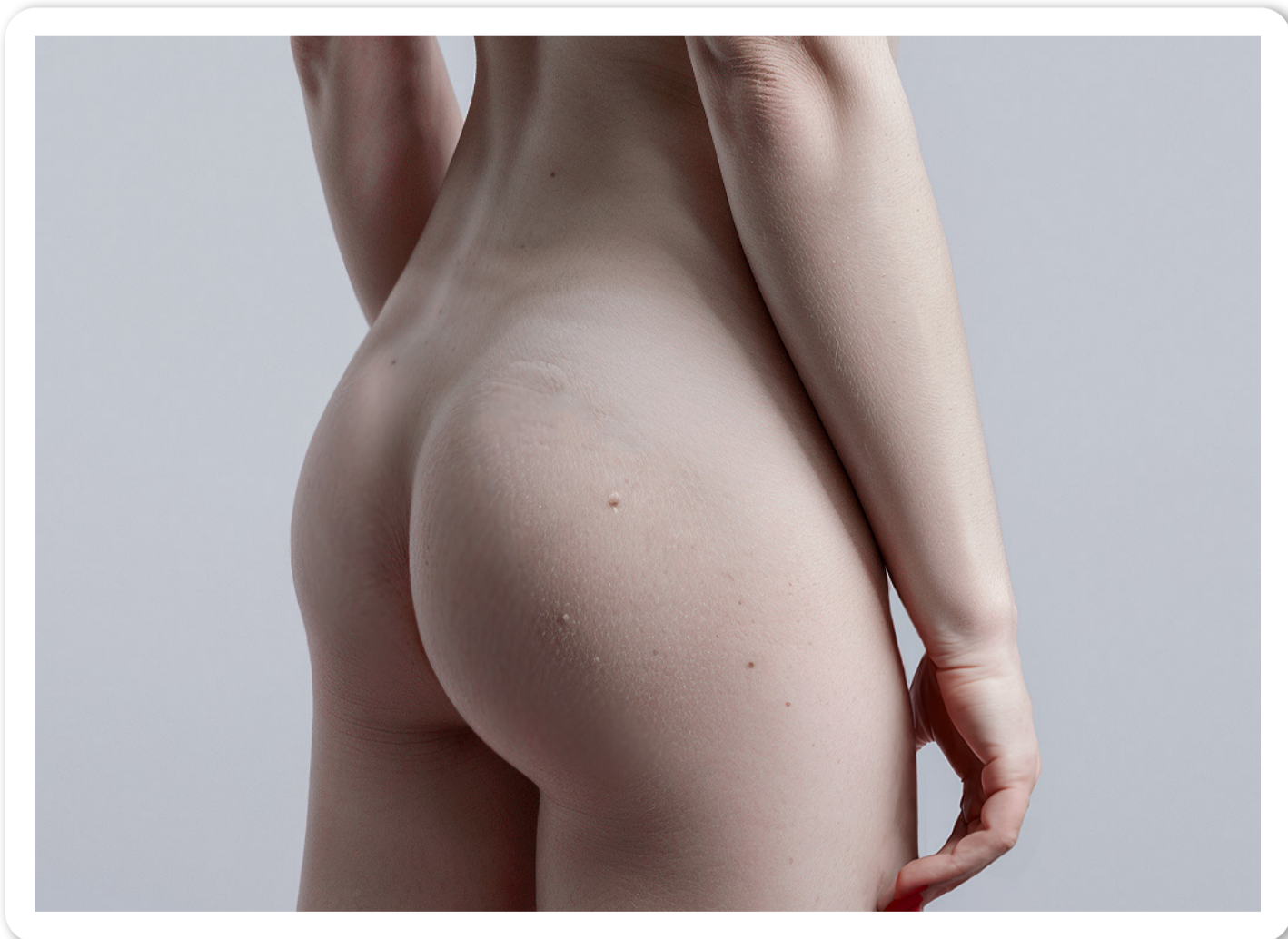


References) Augmentation of breasts by VISIA-CR
Clinical trials by Dermatol Ther 2022;11:3-13



References) Augmentation of breasts by VISIA-CR
Clinical trials by Dermatol Ther 2022;17:10-15

Buttocks Augmentation Procedure

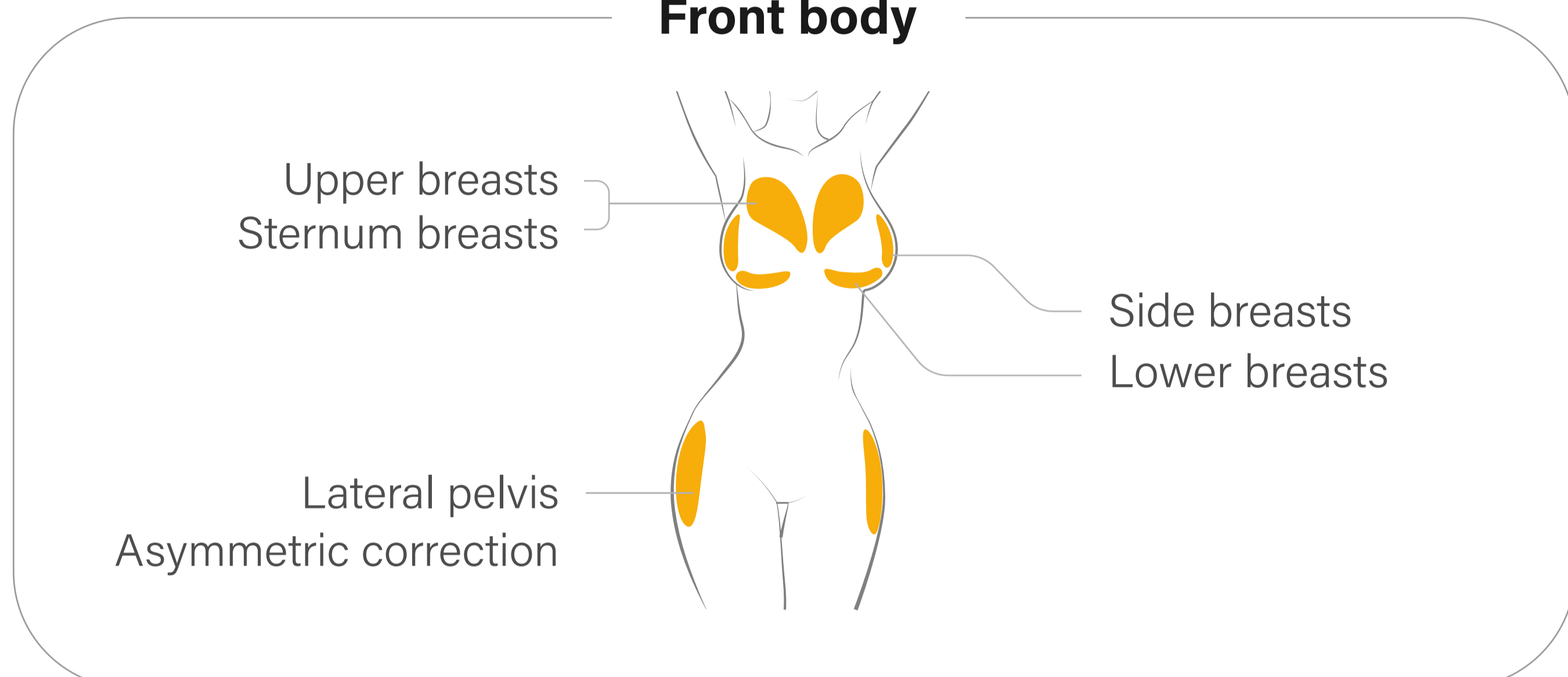


References) Augmentation of buttocks by VISIA-CR
Clinical trials by Dermatol Ther 2022;21:35-19

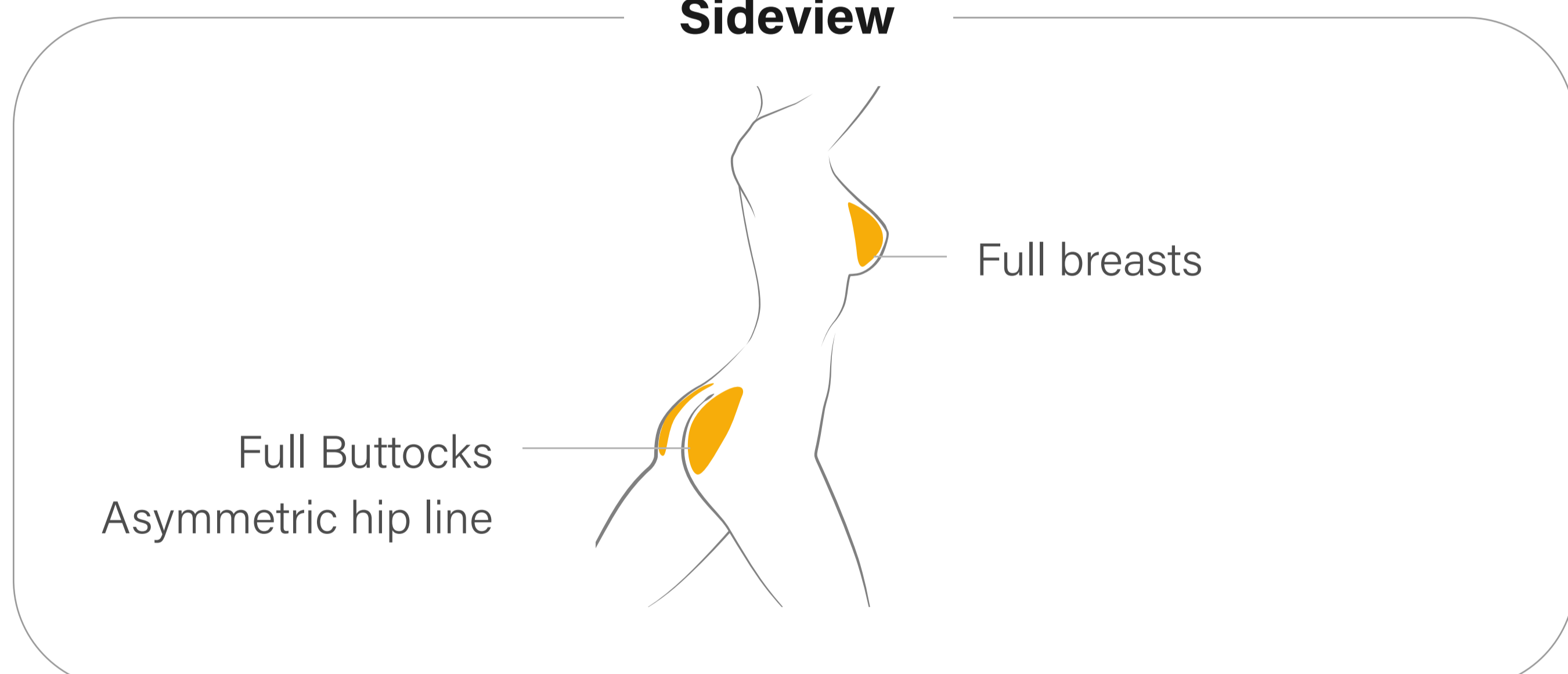
TREATMENT

Treatment Area

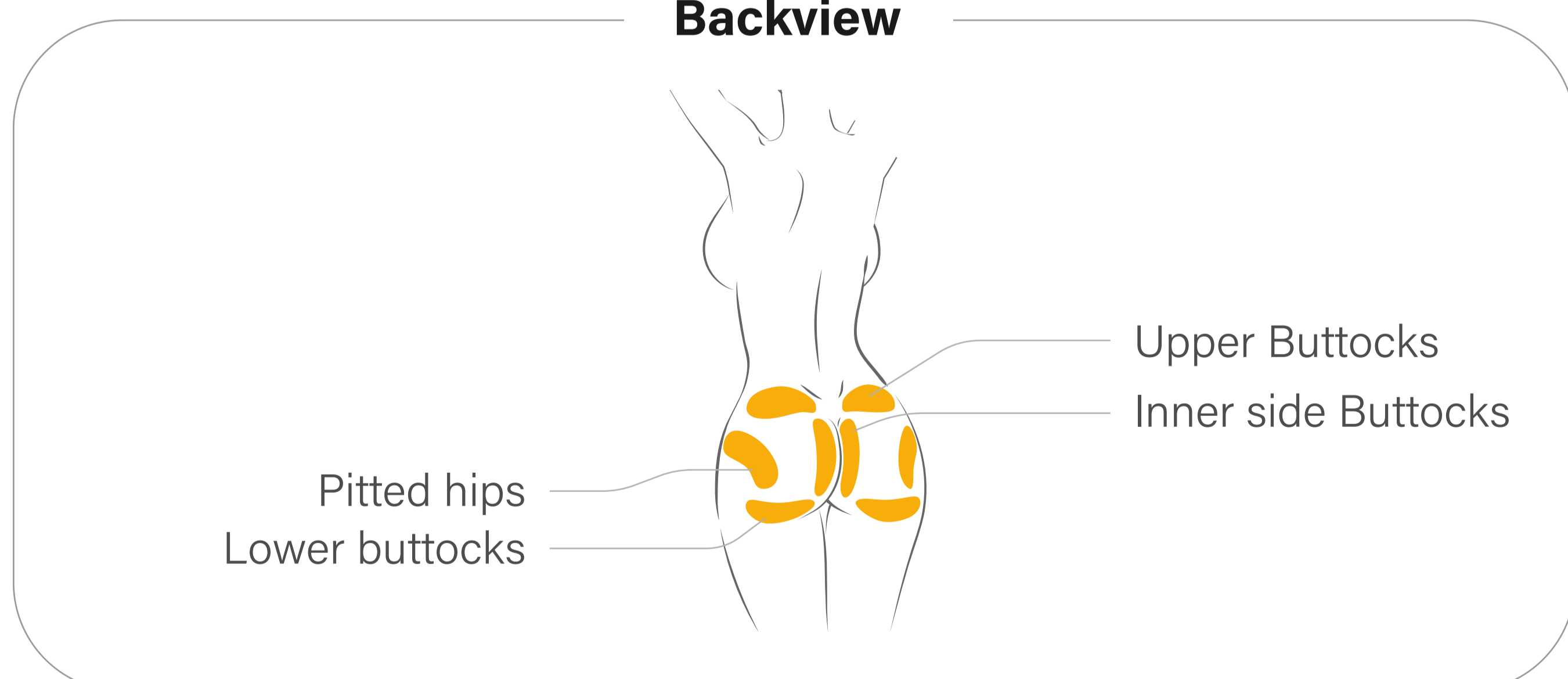
Front body



Sideview

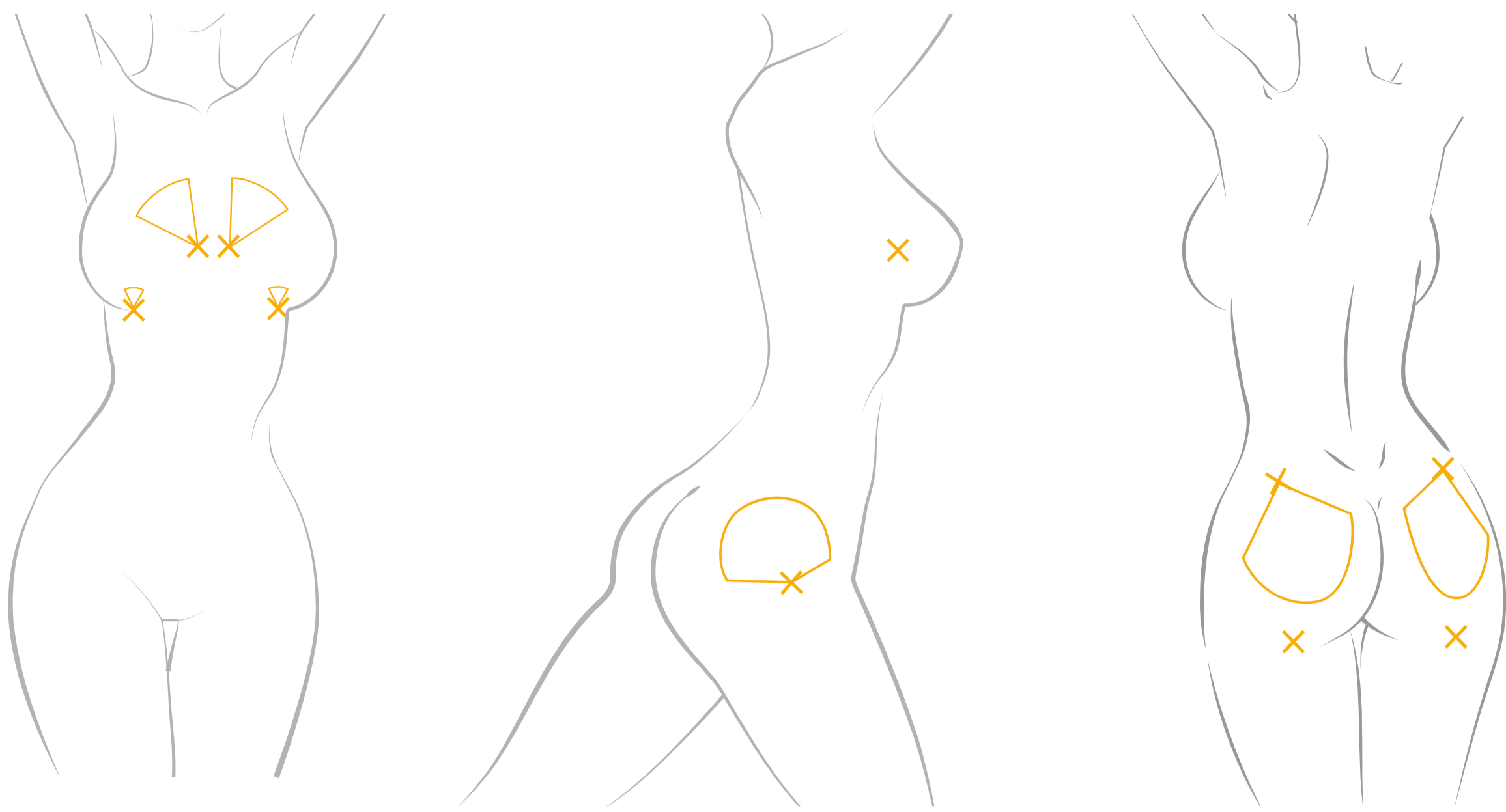


Backview



※ If patient have severe skin laxity or severe case of ptosis in the buttocks, it is strongly recommended not to inject hyaluronic acid filler into the lower part of the buttocks.

Typical Injection Site



Recommended Cannula

- ⦿ breasts augmentation – 14G 90mm micro-cannula recommended
- ⦿ upper breasts augmentation – 20G 70mm micro-cannula recommended
- ⦿ buttocks augmentation – 18G 70mm or 18G 90mm micro-cannula recommended

Treatment Process

- ⦿ Check whether the patient is in a suitable condition for the procedure.
 - ⦿ Wash the treatment area with soap and water.
 - ⦿ Disinfect the treatment area with Alcohol or other antiseptic.
 - ⦿ Inject LEXYFILL HA body filler into the subcutaneous tissue plane of treatment area using thin-wall gauge needle or cannula
 - ⦿ When injection is completed, treated site should be gently massaged so that it conforms to the contour of the surrounding tissues.
- ※ Detailed application instructions are provided in the manual enclosed with the product.

Precautions After Treatment

- ⦿ Apply ice packs to the treated area for 15 to 20 minutes at a time, several times a day, to help reduce swelling and bruising.
- ⦿ Avoid putting pressure on the treated area for at least 24 hours after procedure
- ⦿ Avoid for at least 48 hours after procedure
 - Strenuous physical activity or exercise
 - Alcohol and smoking
 - hot baths, saunas, and steam rooms

※ Detailed Precautions are provided in the manual enclosed with the product.

Volumizing on the Volumizing LEXYFILL VOLUME CREAM

We created ^{AETERDERM™} **LEXYFILL VOLUME CREAM**

as an effect collaboration with ^{AETERDERM™} **LEXYFILL**

by developing the optimal formula to maximize the treatment effect and prevent the filler's side effects.

■ Function 1

Volumizes your body through fat cell proliferation by VOLUFILINE

■ Function 2

Makes skin firmer and elastic via Collagen & Elastin Biosynthesis

■ Function 3

Stretch Mark Prevention & Healing

■ Function 4

Moisturizing & Soothing the skin



Apply this cream gently on the LEXYFILL treatment area twice a day for 10 ~ 20 minutes each.

It maximizes the effect of body filler treatment, maintains volume over the long term, and creates a more natural shape through the natural proliferation of fat cells.

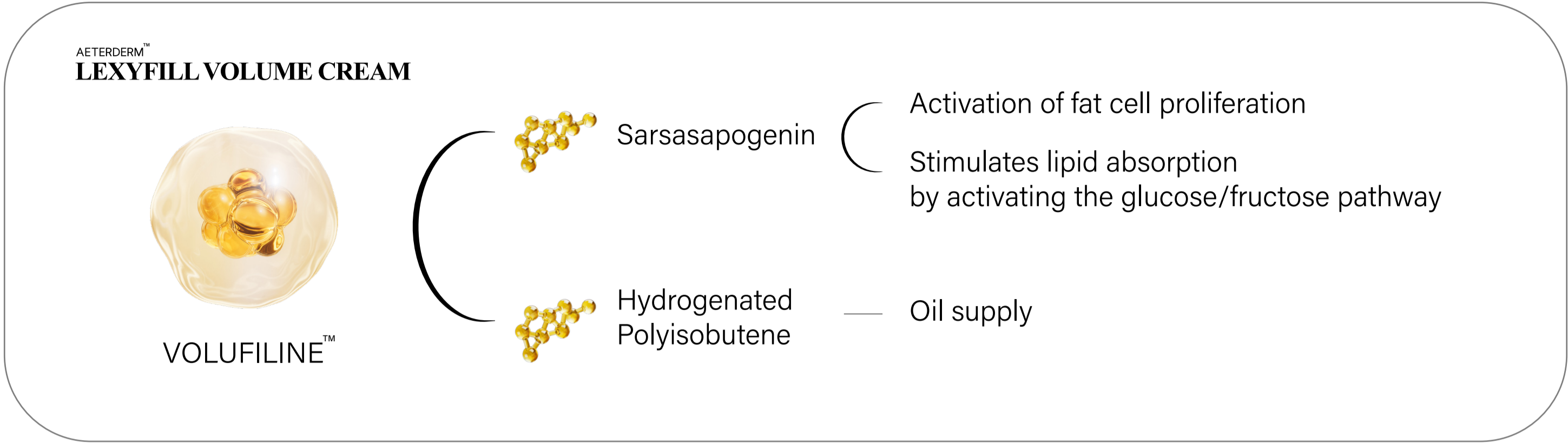
^{AETERDERM™}
LEXYFILL
VOLUME CREAM
Fill Your Luxury Beauty



Function 1

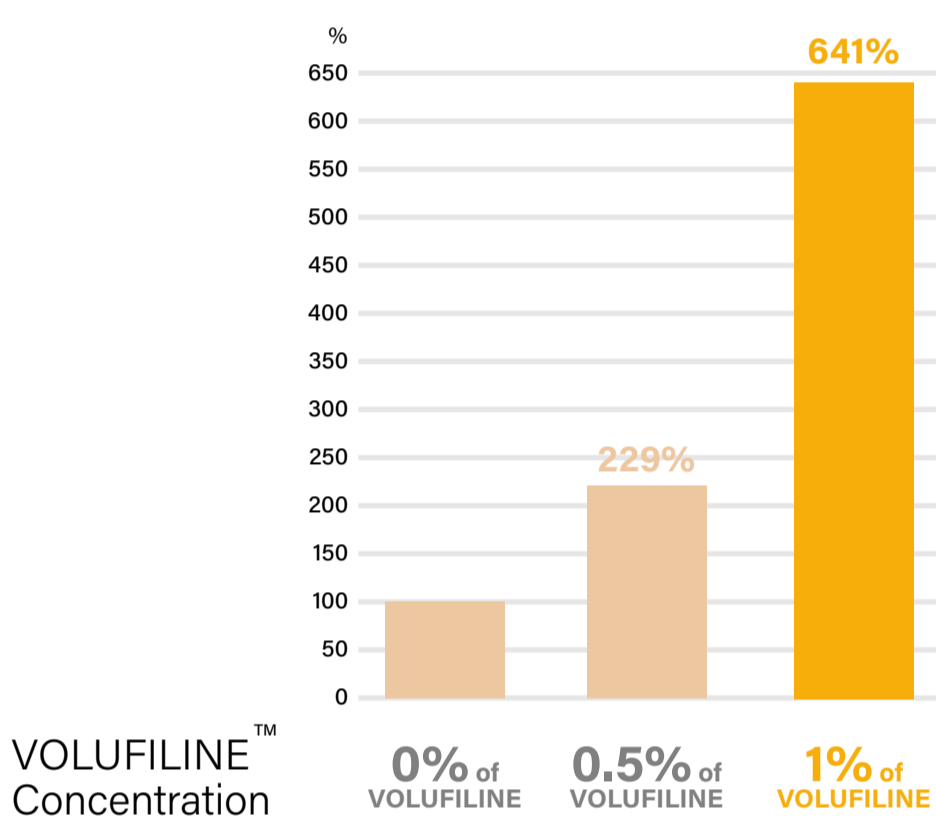
Fat Cell Proliferation by VOLUFILINE™

It contains 50,000 ppm of VOLUFILINE, an internationally patented raw material that has been clinically tested for fat cell proliferation.

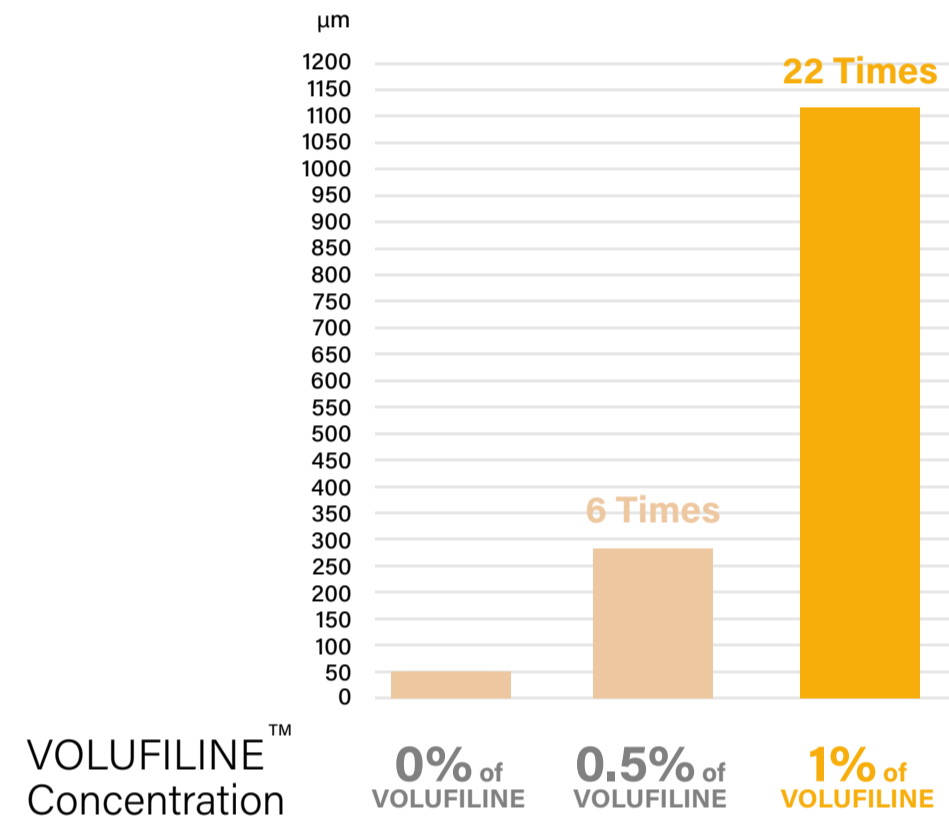


VOLUFILINE™'s Clinical Studies

T1 Fat cell increase rate with VOLUFILINE

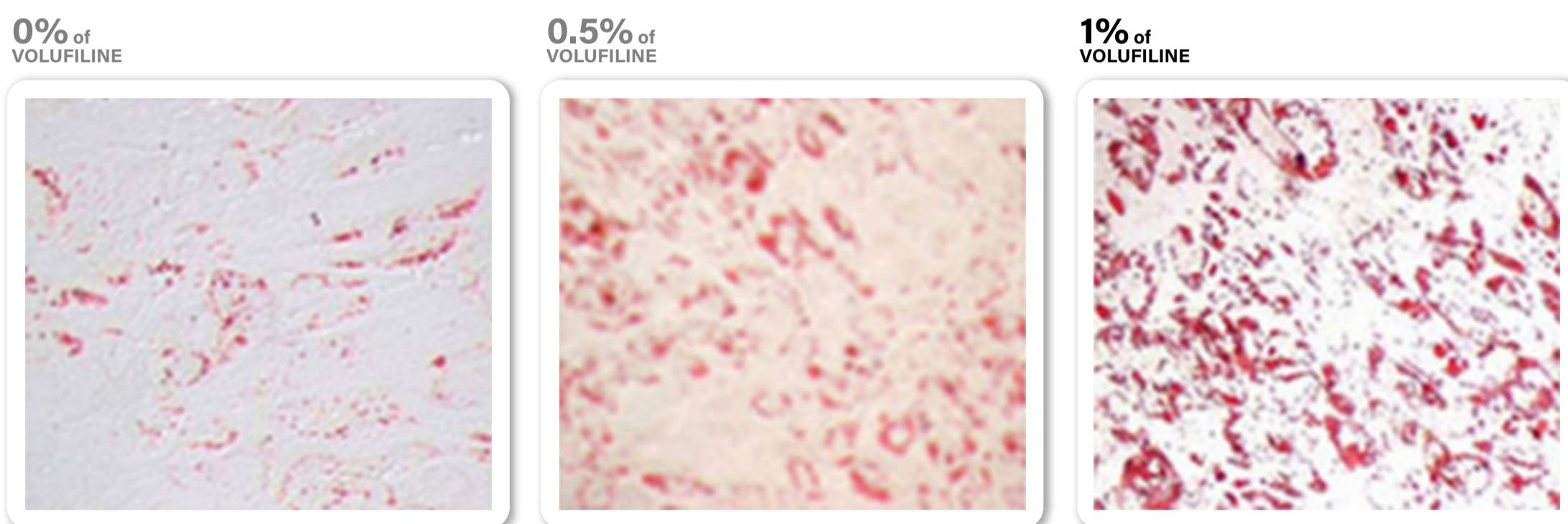


T2 Cell volume increase rate with VOLUFILINE



References) Sci Rep 2024:(22)

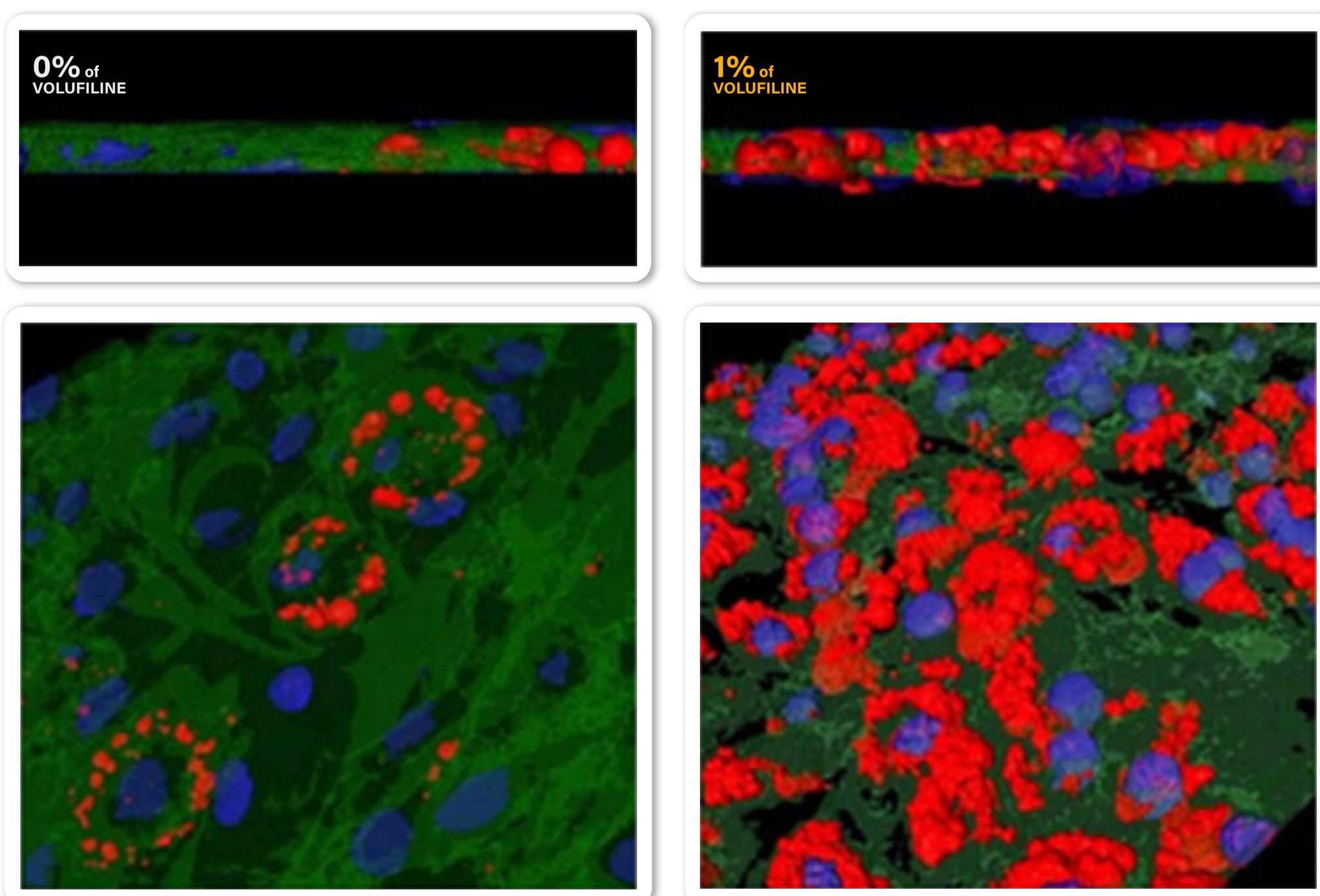
T1 Microscopic photo of fat cells with VOLUFILINE



■ Red colored Fat cells

References) Sci Rep 2024:(27)

T2 MRI photo of fat cells with VOLUFILINE



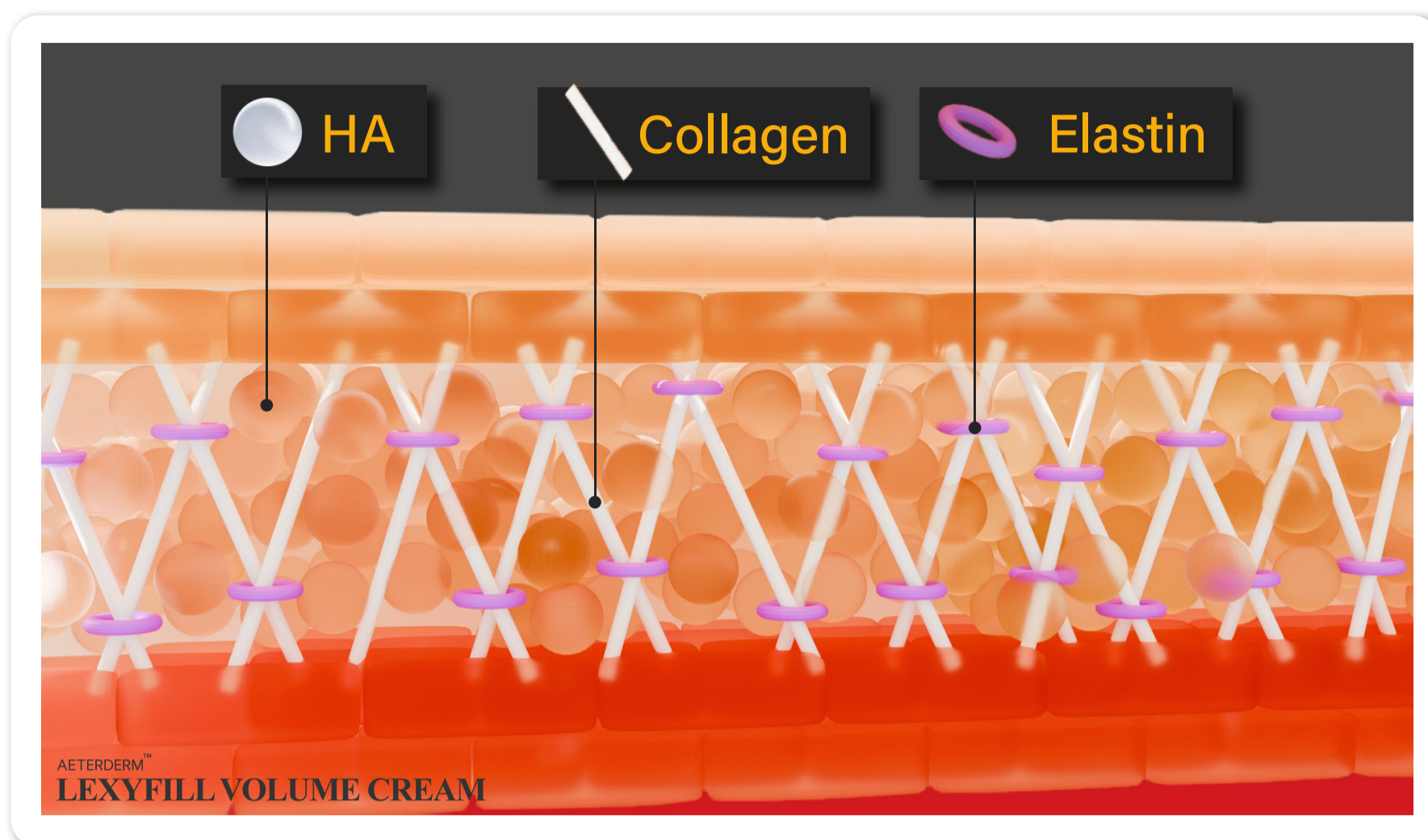
■ Fat cells

References) Sci Rep 2024:(31)

Function 2

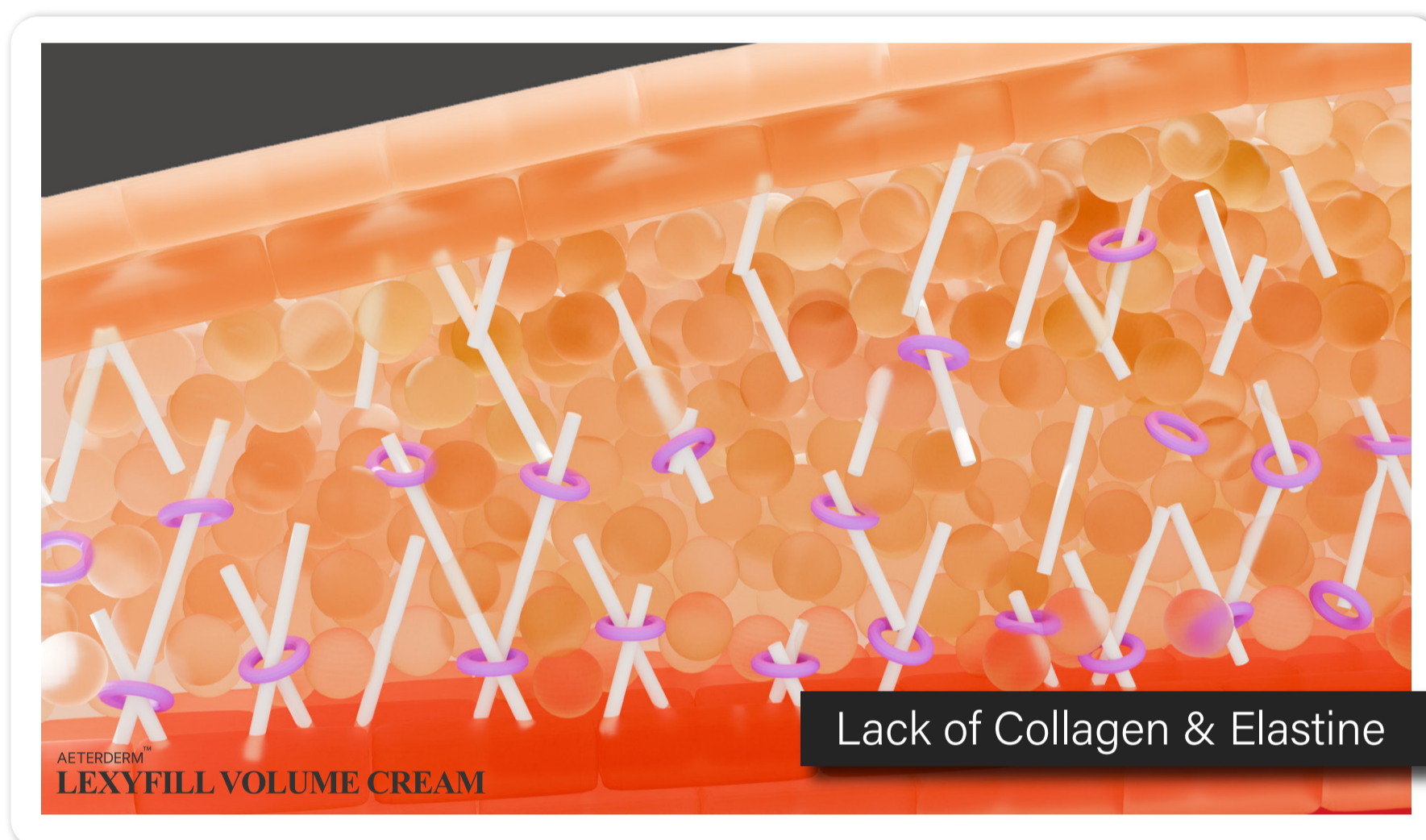
Collagen & Elastin Biosynthesis

Compared to hyaluronic acid filled through filler, there is not enough collagen and elastin to support it, so elasticity and retention may be weak. LEXYFILL VOLUME CREAM fundamentally solves these problems with elasticity.

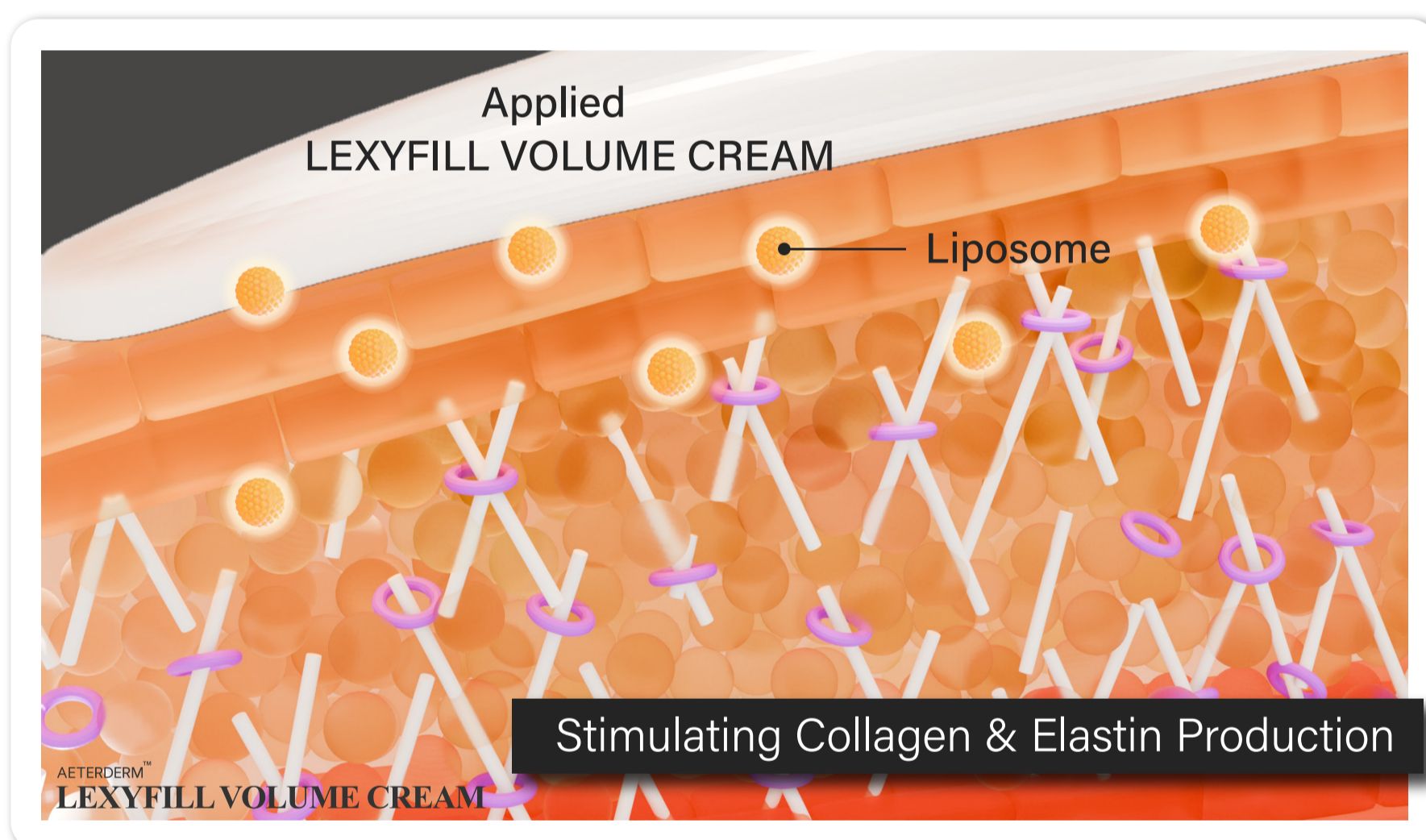


Ordinary Skin Tissue Structure

The three-major skin components
 - Hyaluronic Acid
 - Collagen
 - Elastin

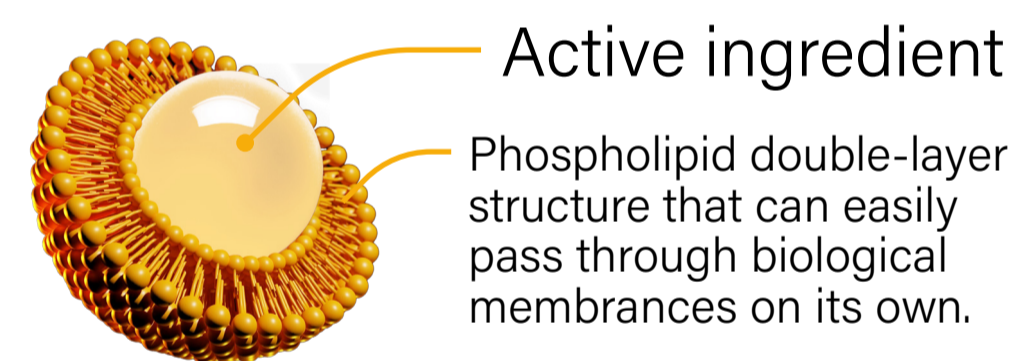


HA Filler supplementation into the skin

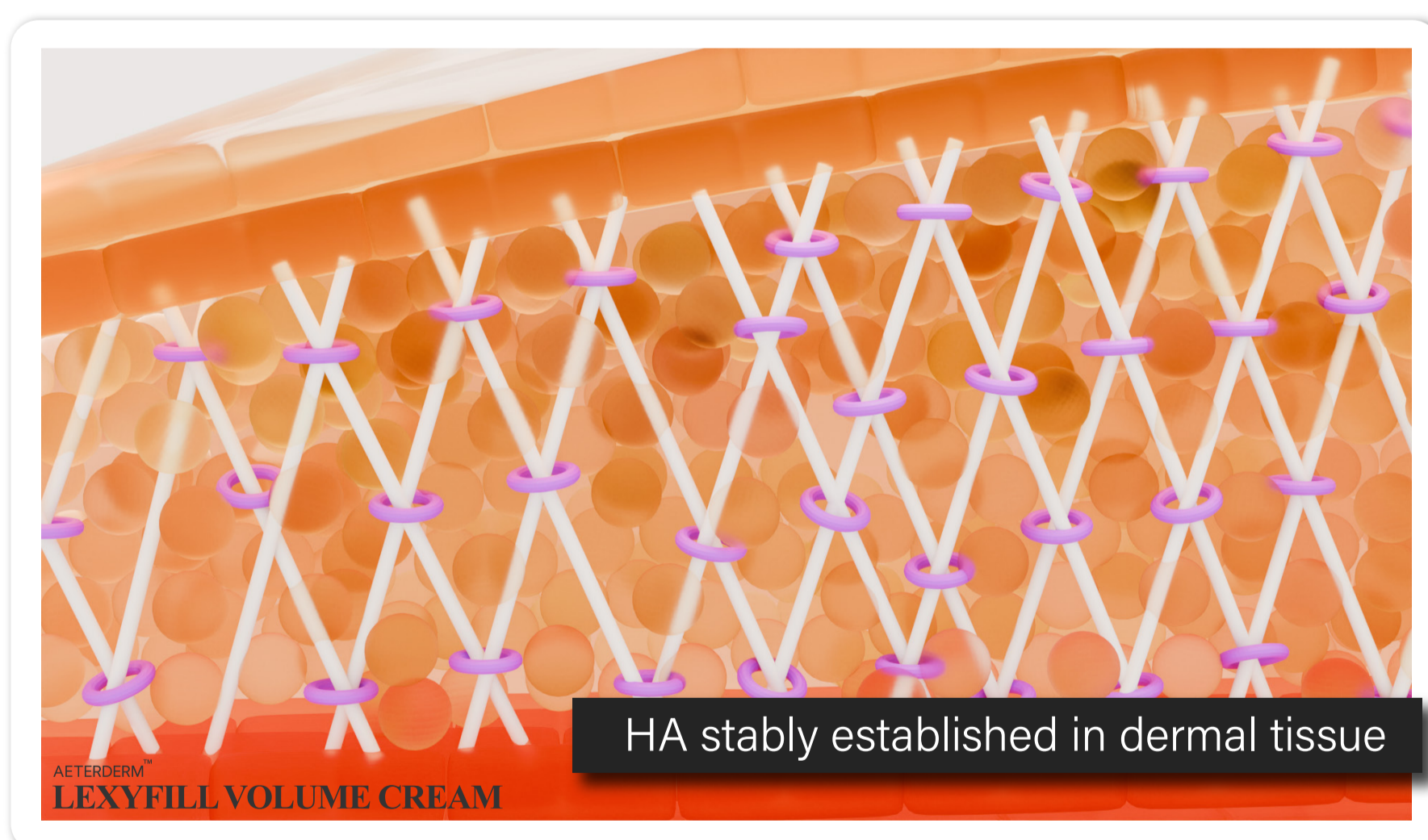


Stimulates Collagen & Elastin Production through Liposome

⊙ Liposome Structure



The liposome structure allows active ingredients to penetrate deep into the skin.



Makes the skin firmer and more elastic.

Strengthen skin elasticity and Retention of HA filler

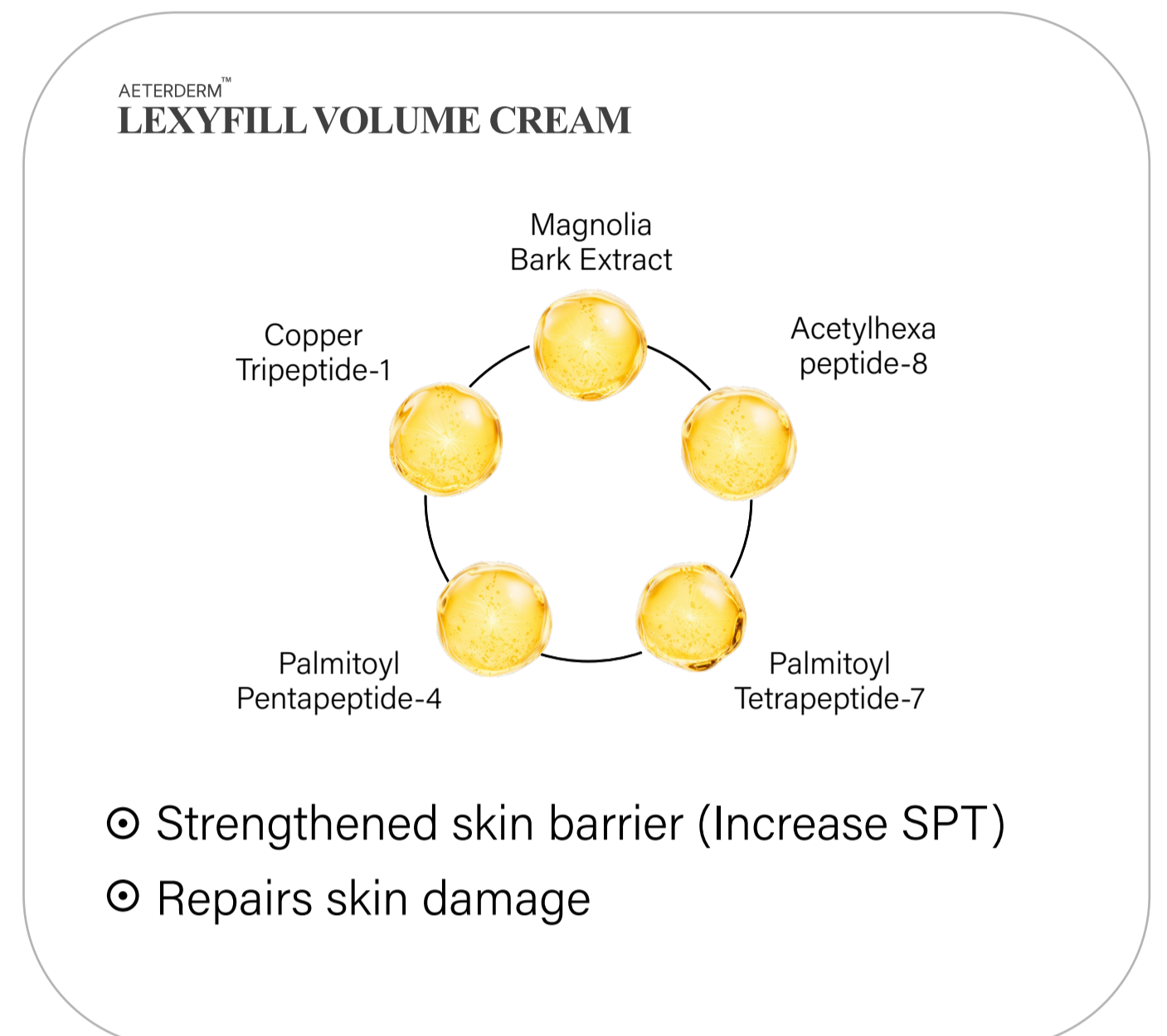
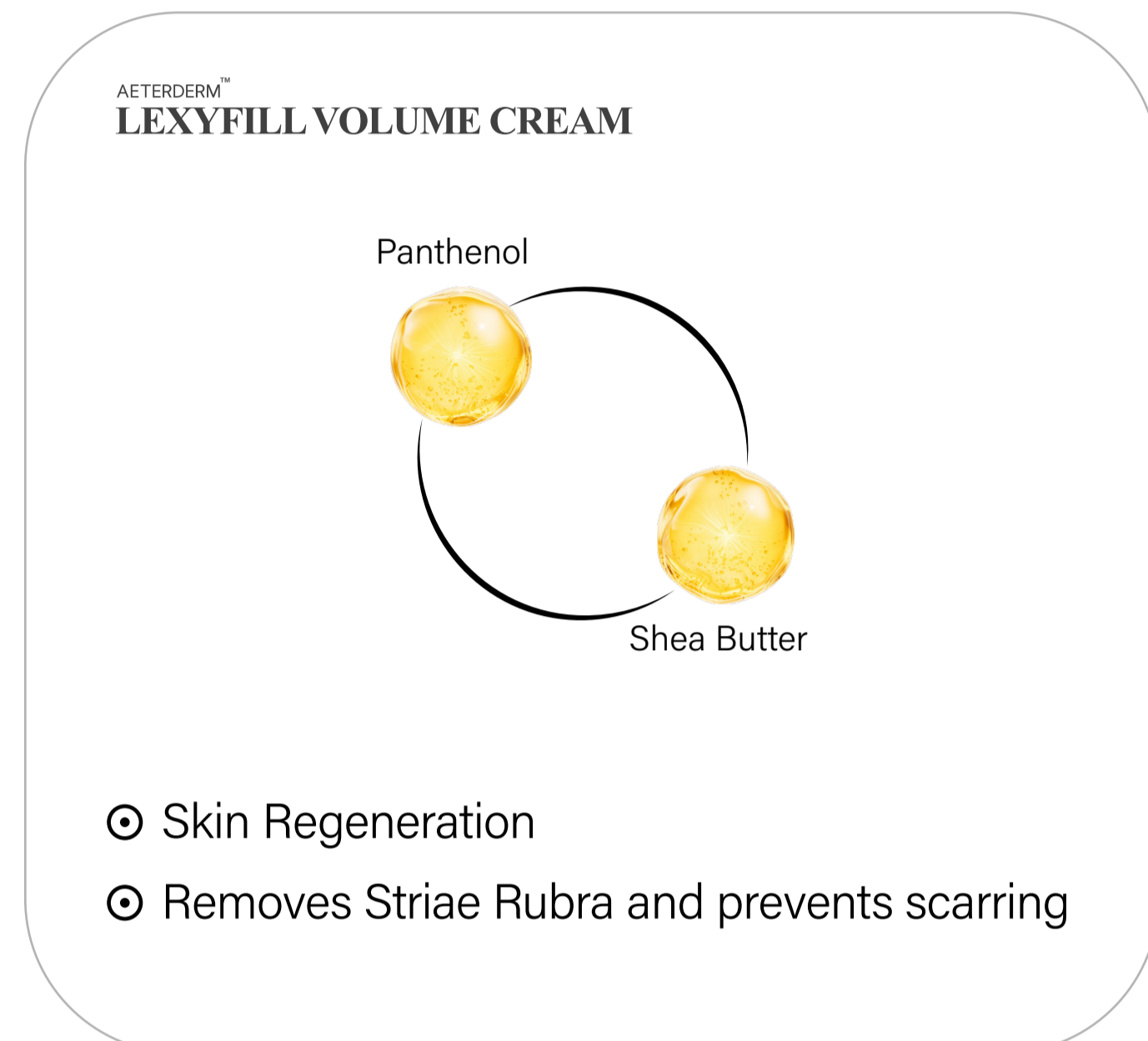
- ⊙ Enhancement of Collagen & Elastin biosynthesis
- ⊙ Activation of EGF (Epidermal Growth Factor)

Function 3

Stretch Mark Prevention & Healing



After receiving bodyfiller treatment, stretch marks may occur due to the sudden increase in volume. LEXYFILL VOLUME CREAM was created as a formula to solve these problems.



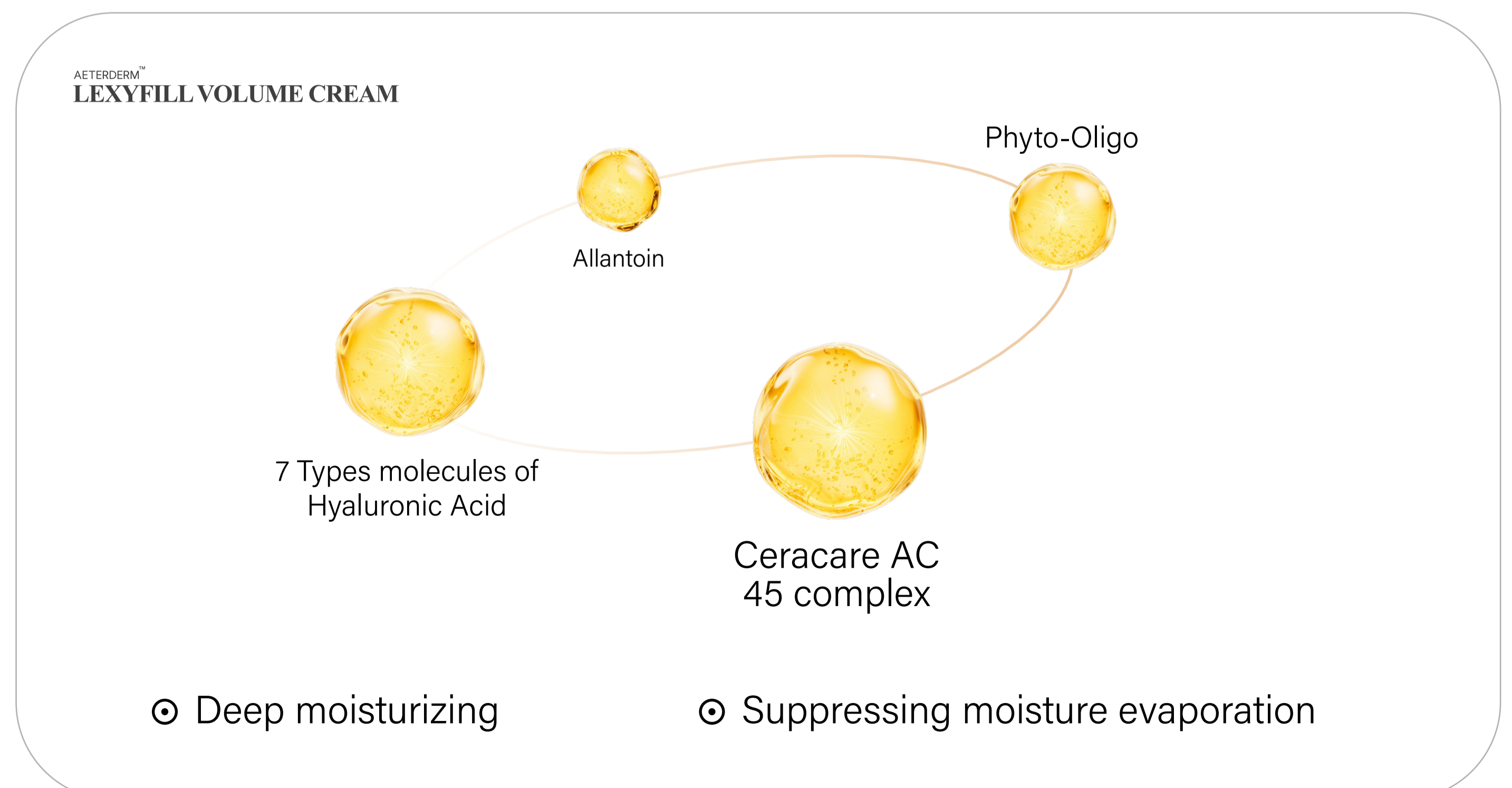
Function 4

Moisturizing & Soothing the skin



Even if the procedure is performed using a cannula, the stimulation of the dermal layer causes heatness, evaporates skin moisture, and the dried skin easily loses elasticity and leaves stretch mark scars (Striae Distensae).

LEXYFILL VOLUME CREAM has effective formula to prevent these side effects.



Fill Your Luxury beauty



AETERDERMTM LEXYFILL

[COMPOSITION]

Cross-linked hyaluronic acid	_____	24 mg / mL
Phosphate-buffered saline	_____	q.s.

[PACKING]

60cc x 1 Vial / Box

[STORAGE]

To be stored at room temperature (1~30°C) away from direct sunlight.

AETERDERMTM LEXYFILL VOLUME CREAM

[INGREDIENTS]

Water, Hydrogenated Polyisobutene, Butylene Glycol, Glycerin, Hydrogenated Poly(C6-14 Olefin), Cetearyl Alcohol, Pentaerythrityl Tetraistearate, 1,2-Hexanediol, Niacinamide, Glyceryl Stearate SE, Butyrospermum Parkii (Shea) Butter, Vinyl Dimethicone, Panthenol, C14-22 Alcohols, Ceramide NP, C12-20 Alkyl Glucoside, Dipropylene Glycol, Carbomer, Arginine, Xanthan Gum, Glyceryl Polyacrylate, Magnolia Officinalis Bark Extract, Ethylhexylglycerin, Allantoin, Sodium Stearoyl Glutamate, Hydrogenated Lecithin, Adenosine, Glyceryl Stearate, Disodium EDTA, Sodium Hyaluronate, Cholesterol, Ceramide NS, Ceramide AS, Ceramide AP, Aloe Barbadensis Leaf Extract, Althaea Rosea Root Extract, Anemarrhena Asphodeloides Root Extract, Glucose, Caulerpa Lentillifera Extract, Codium Fragile Extract, Hydroxypropyltrimonium Hyaluronate, Tocopherol, Hydrolyzed Hyaluronic Acid, Sodium Acetylated Hyaluronate, Hyaluronic Acid, Sodium Hyaluronate Crosspolymer, Copper Tripeptide-1, Acetyl Hexapeptide-8, Palmitoyl Pentapeptide-4, Potassium Hyaluronate, Palmitoyl Tripeptide-1, Palmitoyl Tetrapeptide-7, Oligopeptide-1, Ceramide EOP

[PACKING]

150mL / Box

WEDERM



WEDERM Co., Ltd.

📍 #502, 5F, JnK Digital tower, Digital-ro 26gil 111, Guro-gu, Seoul, Republic of Korea

🌐 www.wedermglobal.com

📷 [wederm_global](https://www.instagram.com/wederm_global)

✉ wederm@wederm.co.kr

☎ +82-70-4776-5961